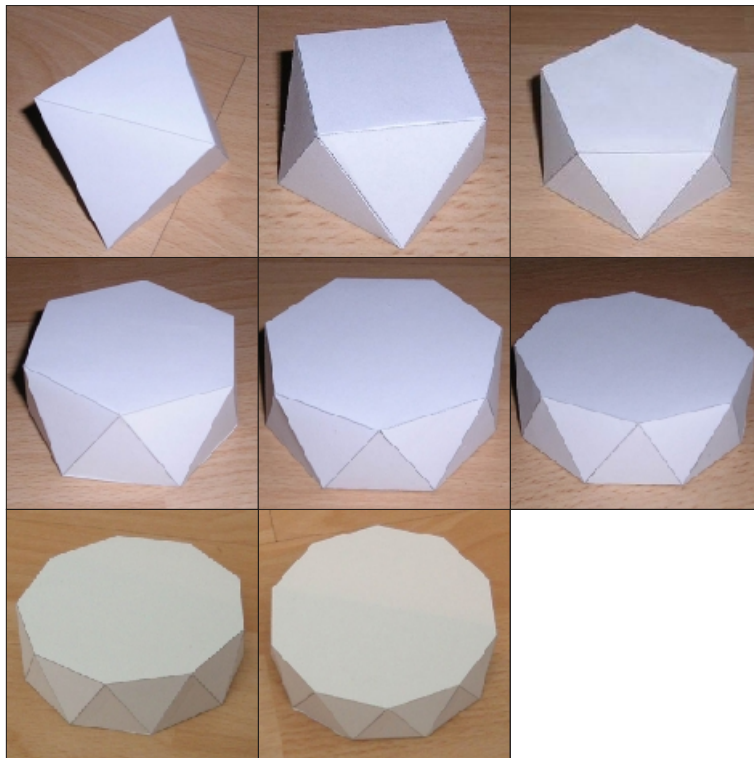


Paper Models of Antiprisms

Gijs Korthals Altes



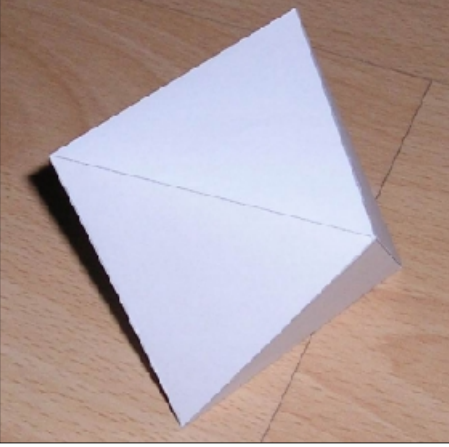
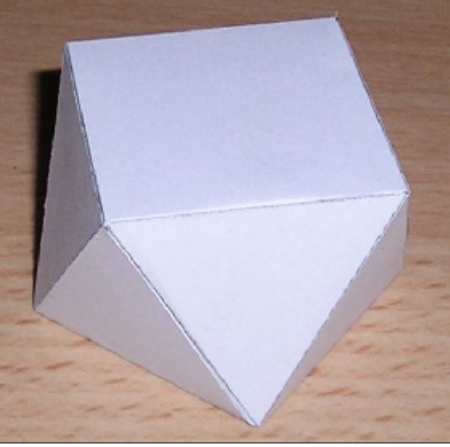
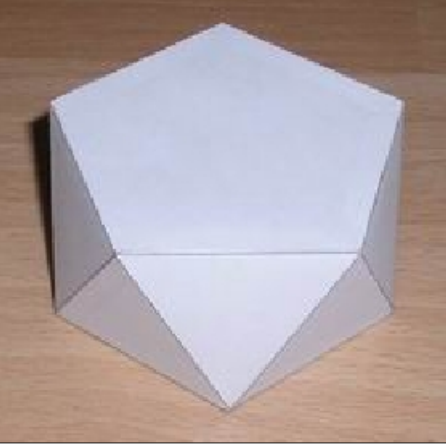

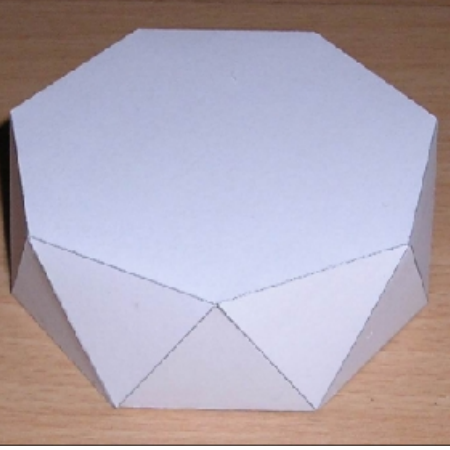
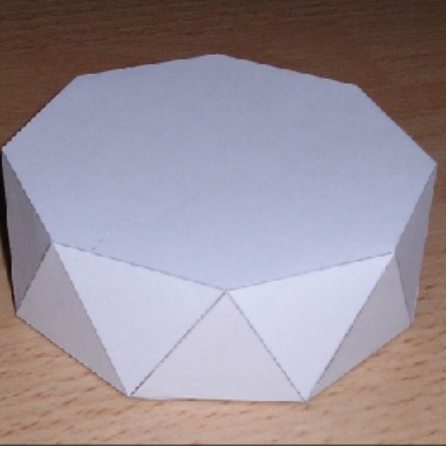
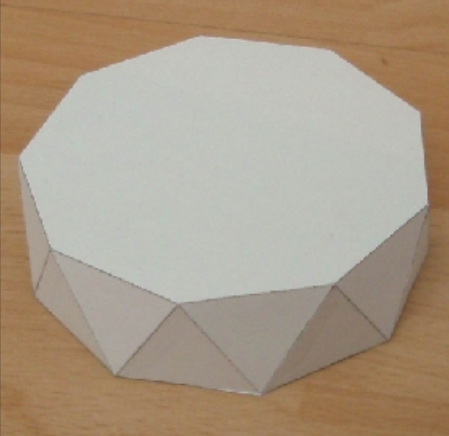
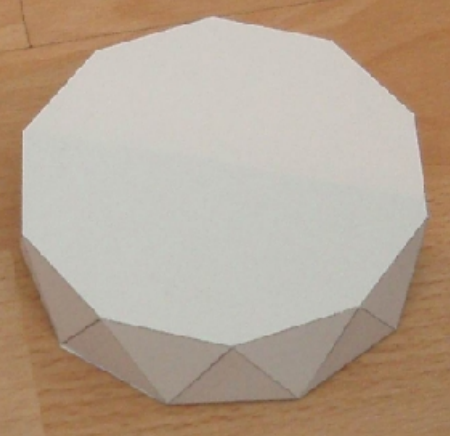
www.korthalsaltes.com

Copyright © 2009 Gijs Korthals Altes All rights reserved.

It's permitted to make copies for non-commercial purposes only.

email: info@korthalsaltes.com

www.korthalsaltes.com

<p>Triangular Antiprism (octahedron) Faces: 8 Edges: 12 Vertices: 6</p>	<p>Square Antiprism Faces: 10 Edges: 16 Vertices: 8</p>	<p>Pentagonal Antiprism Faces: 12 Edges: 20 Vertices: 10</p>
		
<p>Hexagonal Antiprism Faces: 14 Edges: 24 Vertices: 12</p>	<p>Heptagonal Antiprism Faces: 16 Edges: 28 Vertices: 14</p>	<p>Octagonal Antiprism Faces: 18 Edges: 32 Vertices: 16</p>
		
<p>Enneagonal Antiprism Faces: 20 Edges: 36 Vertices: 18</p>	<p>Decagonal Antiprism Faces: 22 Edges: 40 Vertices: 20</p>	
		

Antiprism:

In geometry, an n -sided antiprism is a polyhedron composed of two parallel copies of some particular n -sided polygon, connected by an alternating band of triangles. Antiprisms are a subclass of the prismaticoids.

Antiprisms are similar to prisms except the bases are twisted relative to each other, and that the side faces are triangles, rather than quadrilaterals.

In the case of a regular n -sided base, one usually considers the case where its copy is twisted by an angle $180^\circ/n$. Extra regularity is obtained by the line connecting the base centers being perpendicular to the base planes, making it a right antiprism. It has, apart from the base faces, $2n$ isosceles triangles as faces.*

A polyhedron (plural: polyhedra) is a three - dimensional figure made up of sides called faces, each face being a polygon

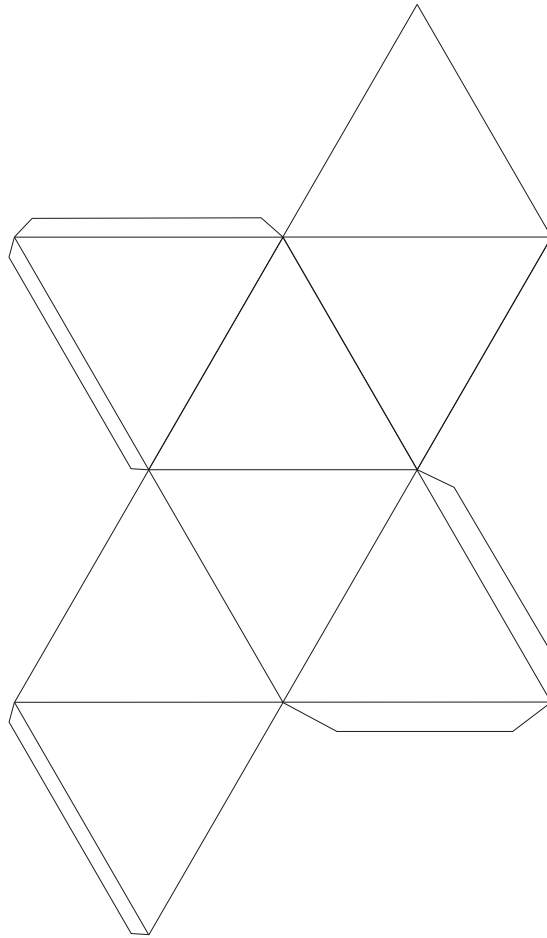
A general prism is a polyhedron possessing two congruent polygonal faces and with all remaining faces parallelograms.

A polygon is a two dimensional figure made up of line segments called edges, that are connected two at a time at their endpoints. In a polyhedron, several polygonal faces meet at a corner (vertex).

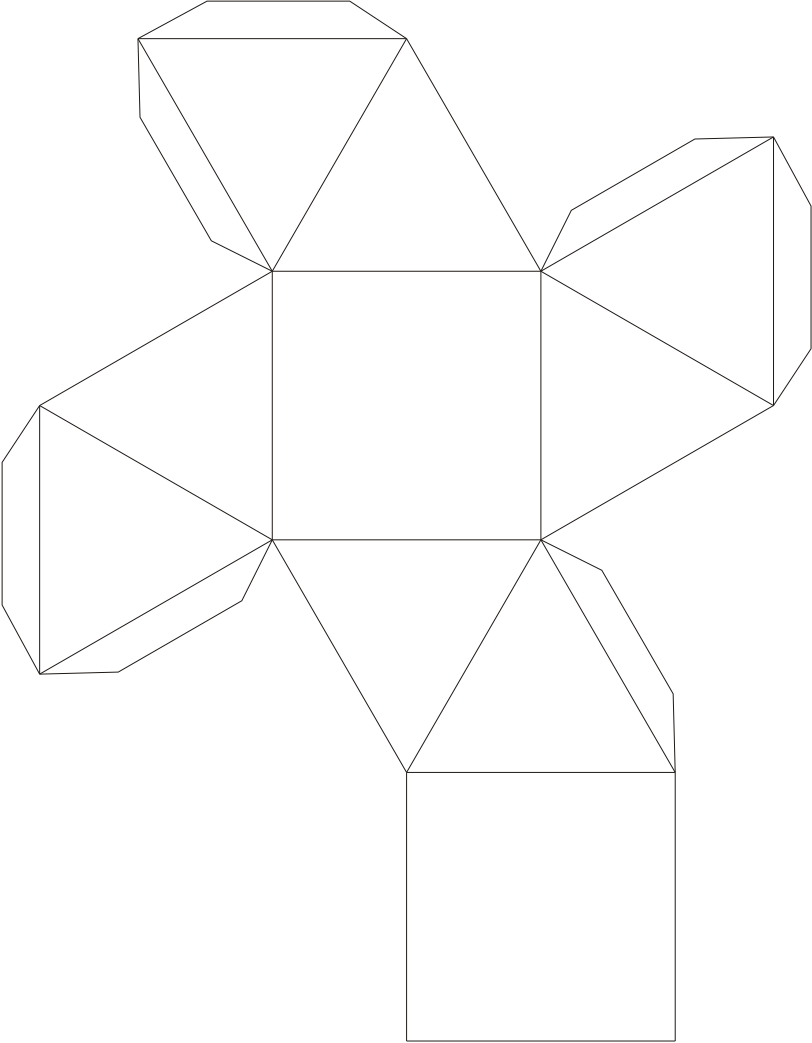
All antiprisms in this document are right antiprisms.

*) source: <http://en.wikipedia.org/wiki/Antiprism>

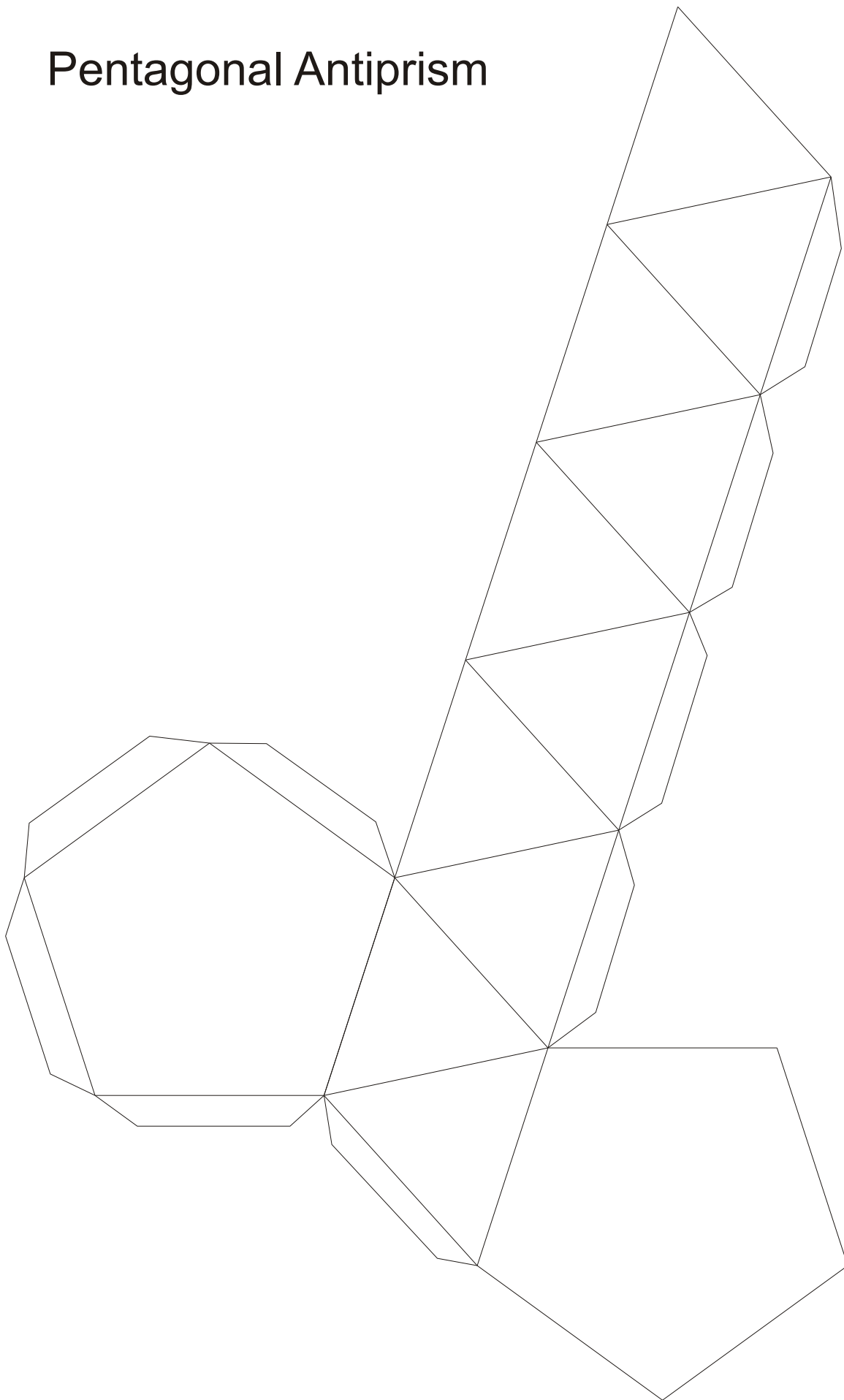
Triangular Antiprism (Octahedron)



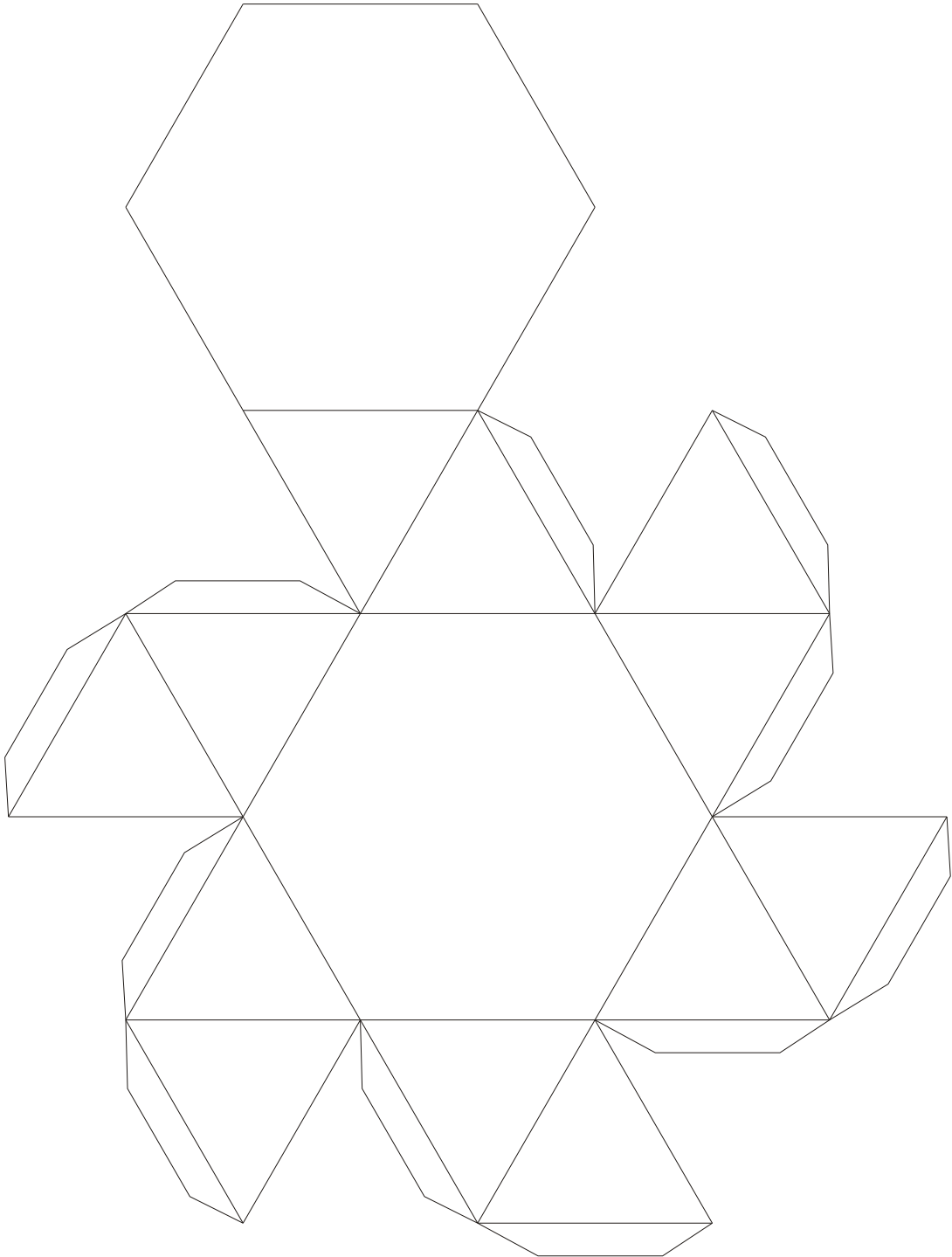
Square Antiprism



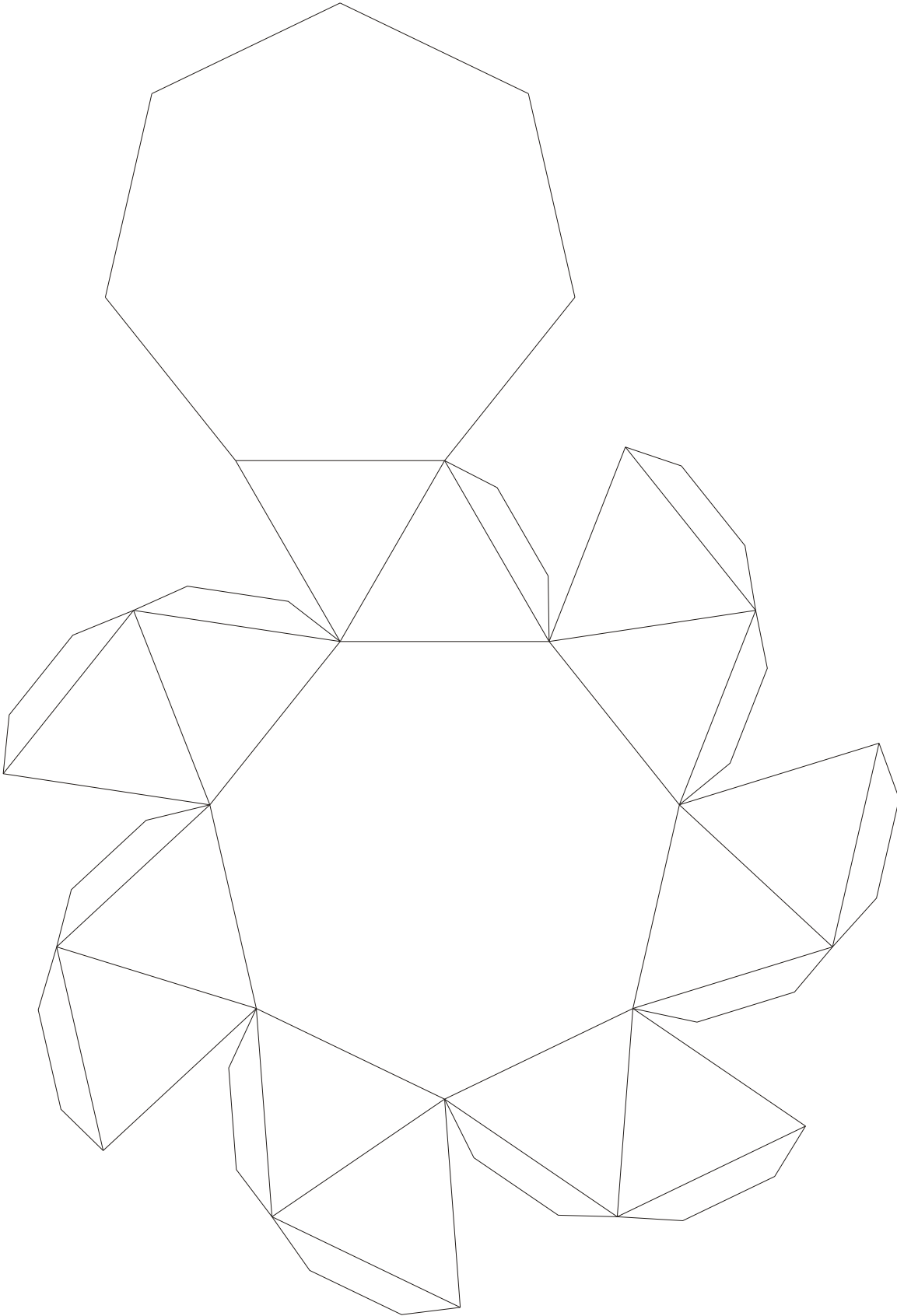
Pentagonal Antiprism



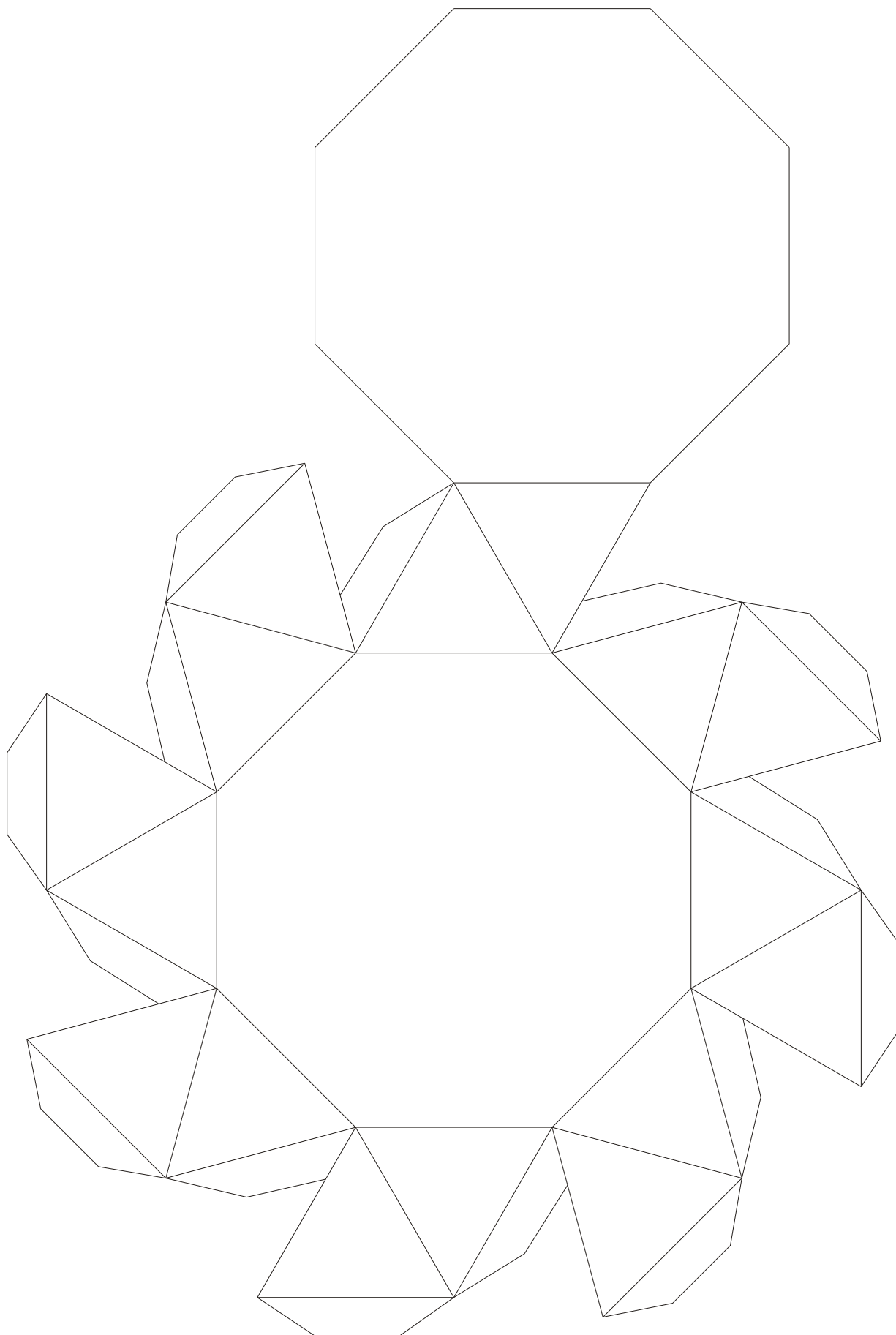
Hexagonal Antiprism



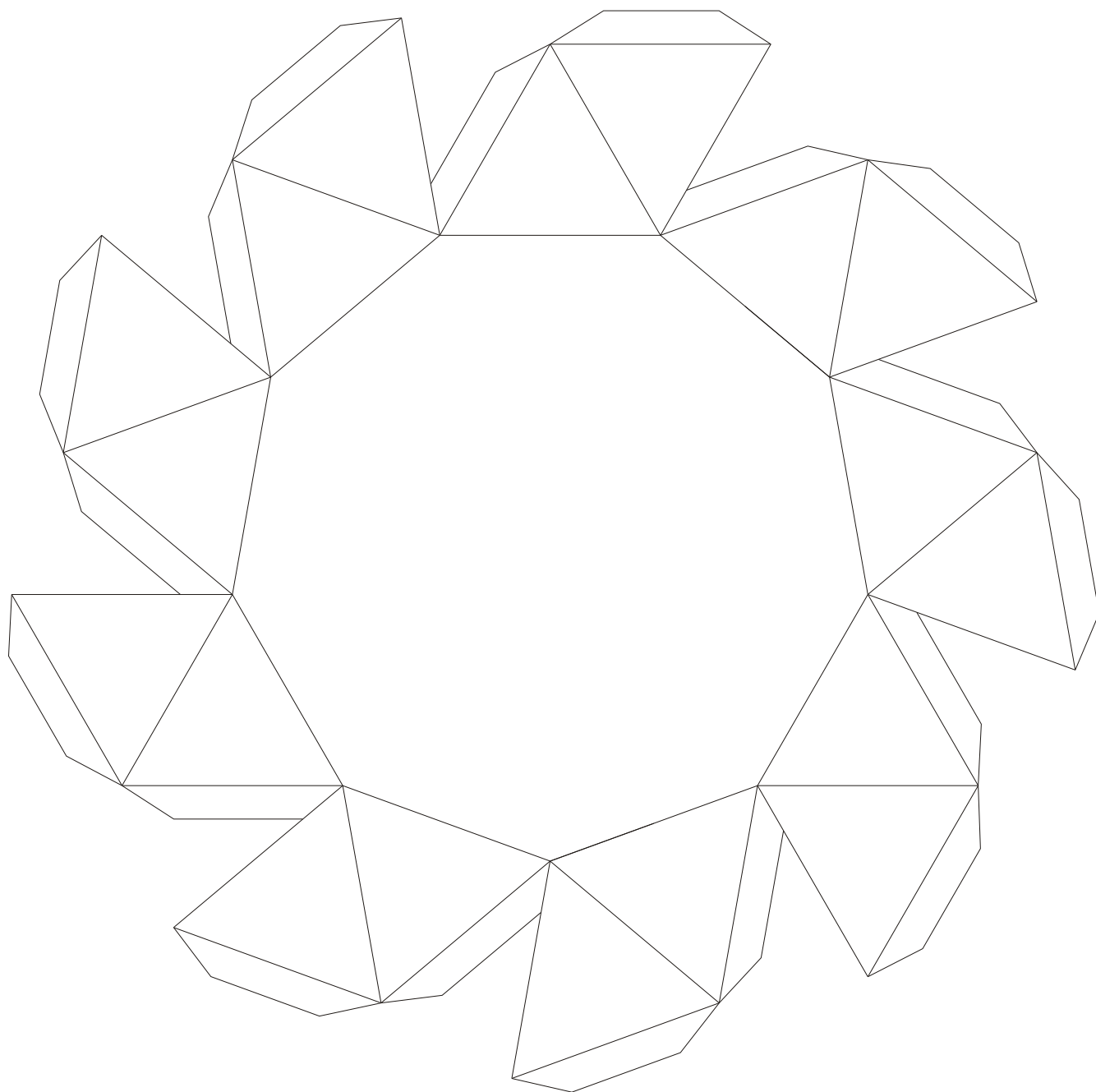
Heptagonal Antiprism



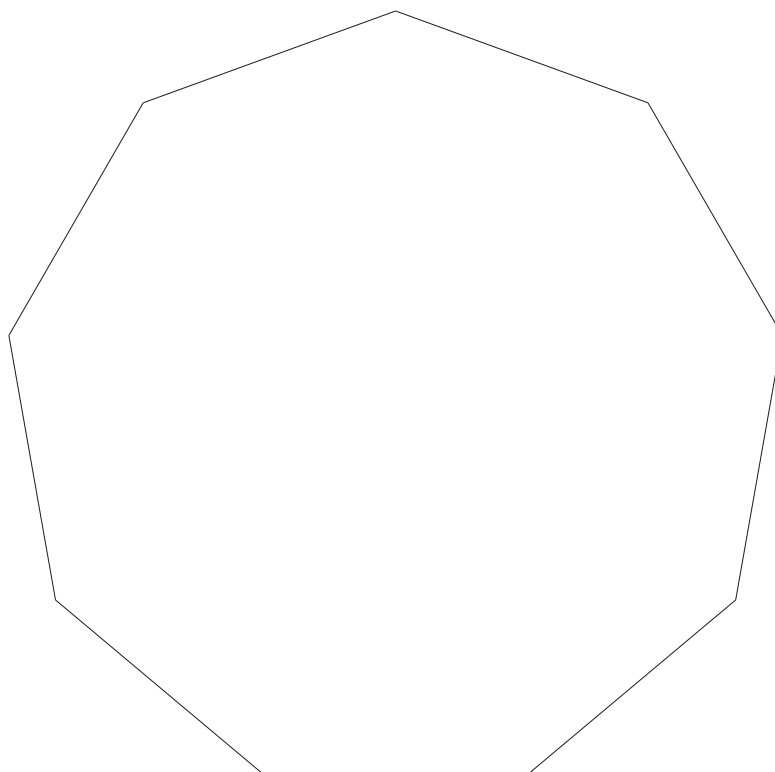
Octagonal Antiprism



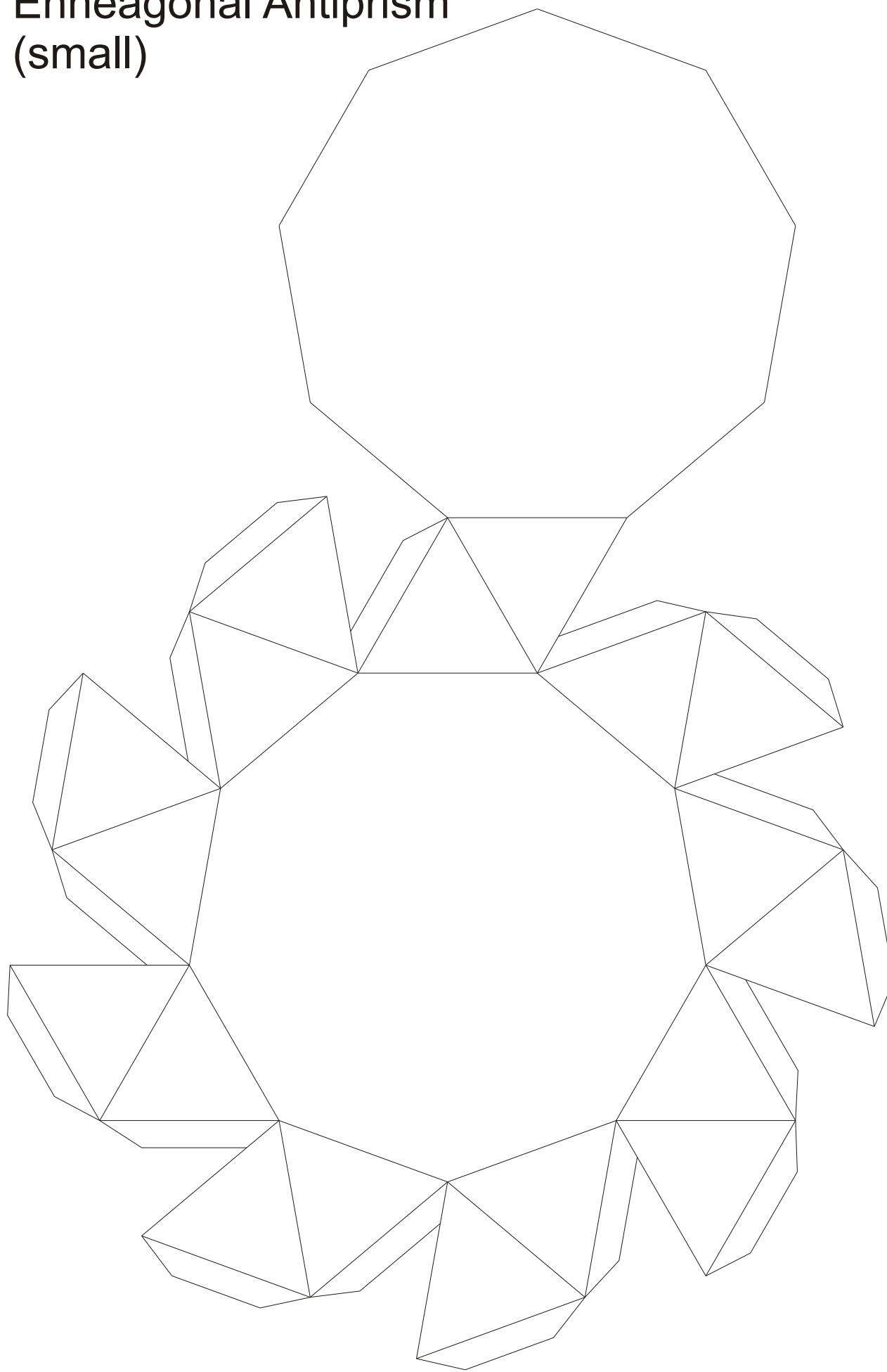
Enneagonal Antiprism (Part 1)



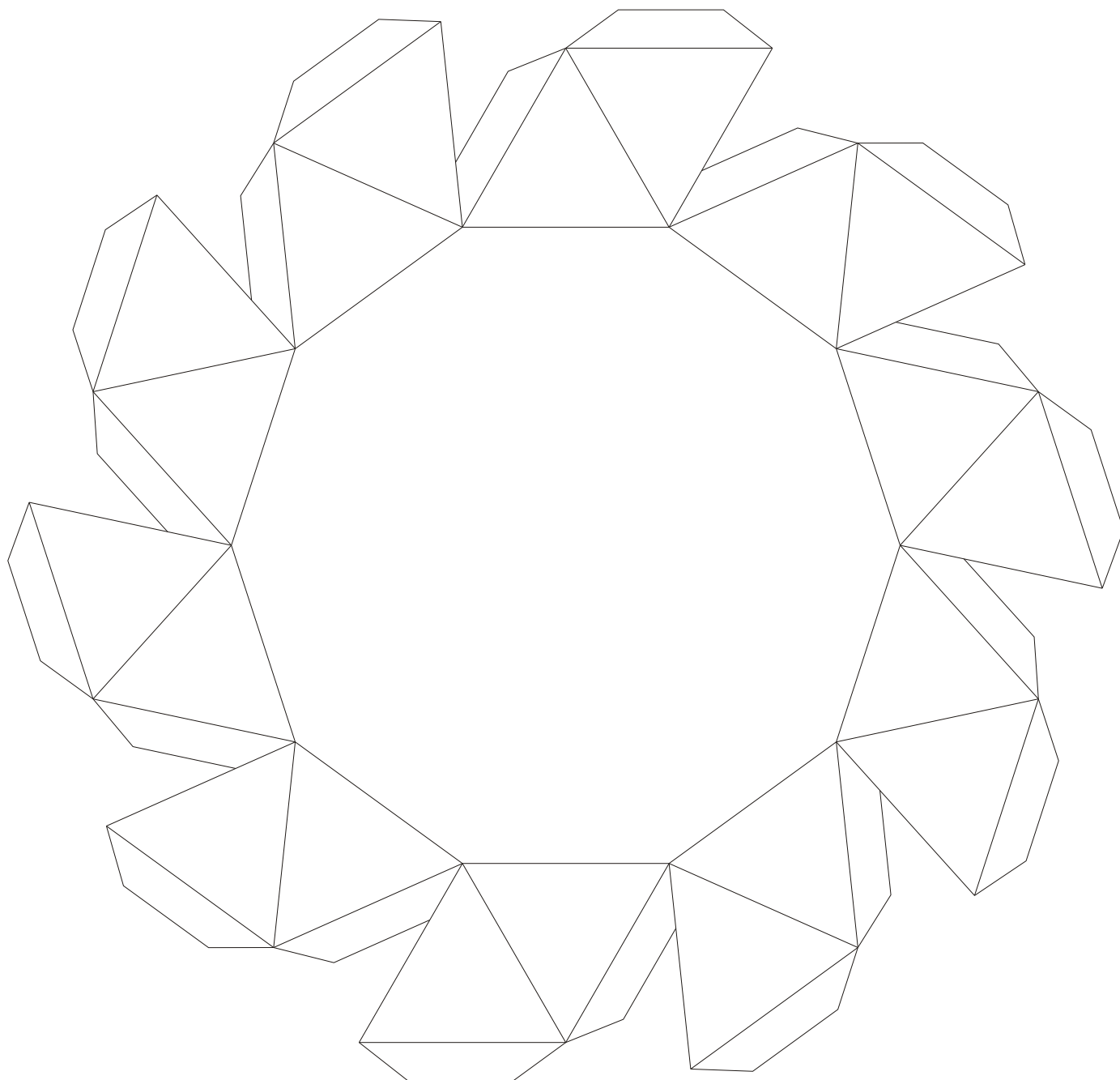
Enneagonal Antiprism (Part 2)



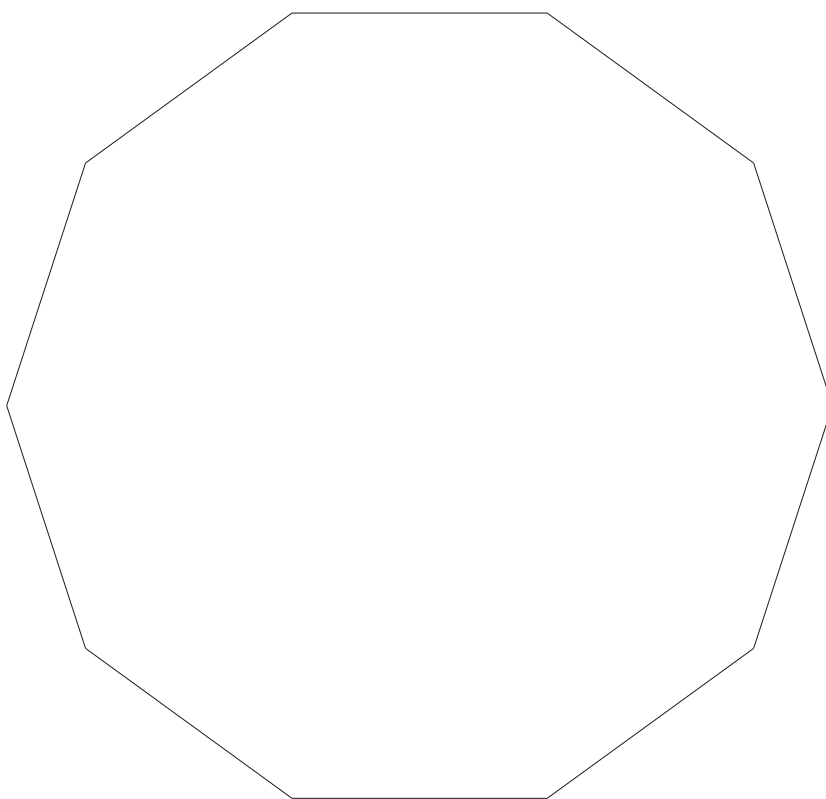
Enneagonal Antiprism (small)



Decagonal Antiprism (Part 1)



Decagonal Antiprism (Part 2)



Decagonal Antiprism (small)

