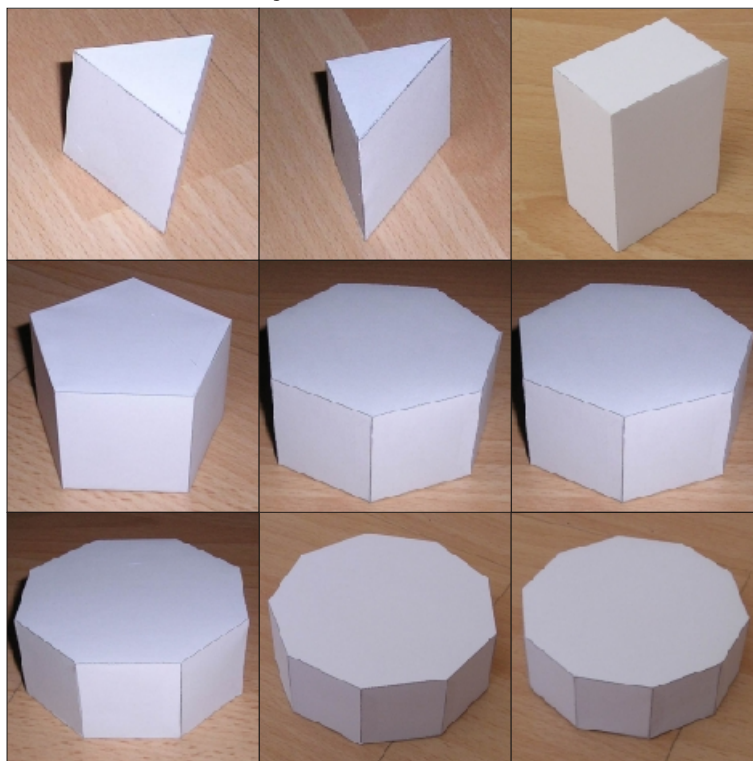


Paper Models of Prisms

Gijs Korthals Altes



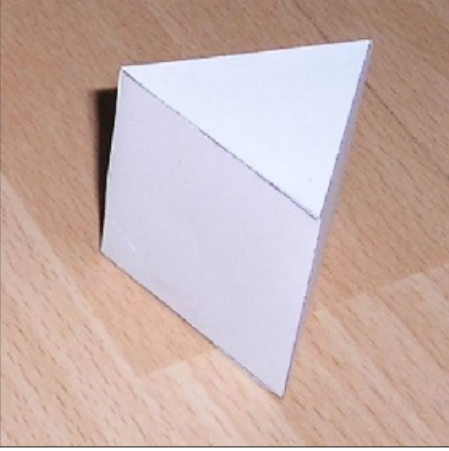
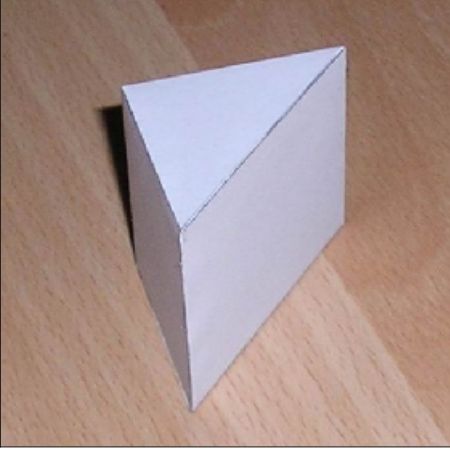
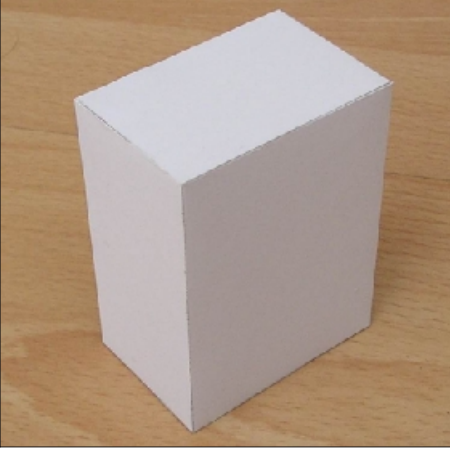
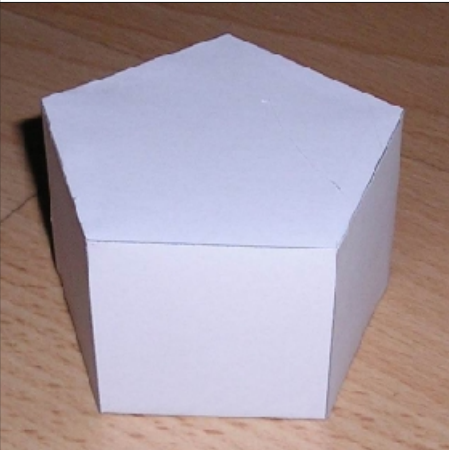
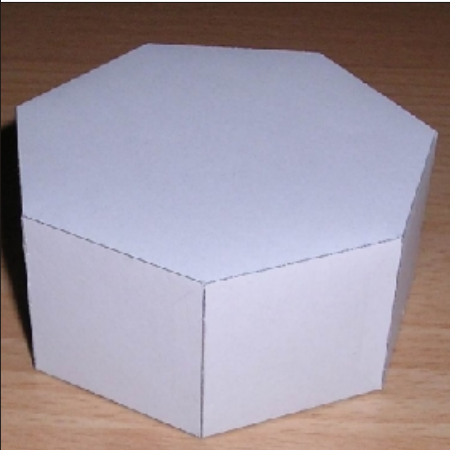
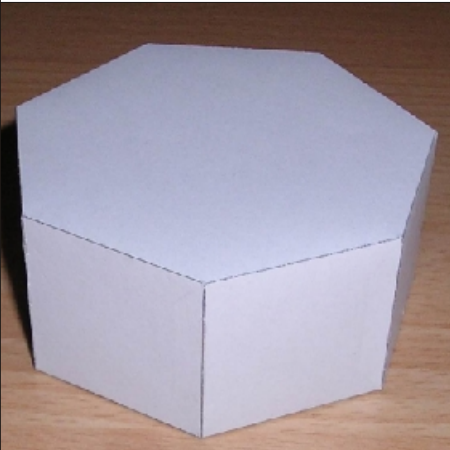

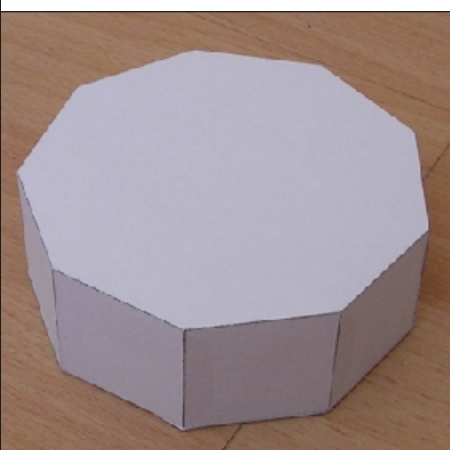

www.korthalsaltes.com

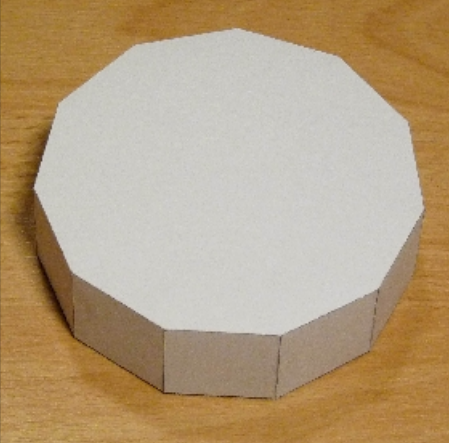
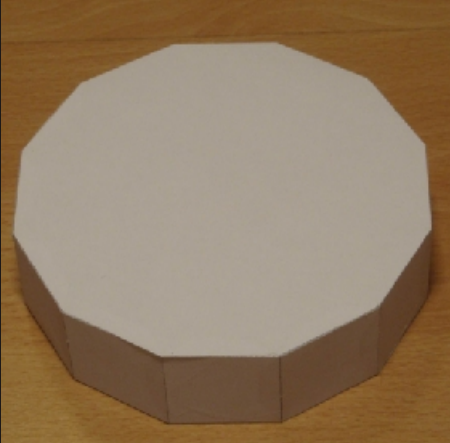
Copyright © 2009 Gijs Korthals Altes All rights reserved.

It's permitted to make copies for non-commercial purposes only.

email: info@korthalsaltes.com

www.korthalsaltes.com

<p>Triangular Prism Faces: 5 Edges: 9 Vertices: 6</p>	<p>Triangular Prism Faces: 5 Edges: 9 Vertices: 6</p>	<p>Rectangular Prism Faces: 6 Edges: 12 Vertices: 8</p>
		
<p>Pentagonal Prism Faces: 7 Edges: 15 Vertices: 10</p>	<p>Hexagonal Prism Faces: 8 Edges: 18 Vertices: 12</p>	<p>Heptagonal Prism Faces: 9 Edges: 21 Vertices: 14</p>
		
<p>Octagonal Prism Faces: 10 Edges: 24 Vertices: 16</p>	<p>Enneagonal Prism Faces: 11 Edges: 27 Vertices: 18</p>	<p>Decagonal Prism Faces: 12 Edges: 30 Vertices: 20</p>
		

<p>Hendecagonal Prism Faces: 13 Edges: 33 Vertices: 22</p>	<p>Dodecagonal Prism Faces: 14 Edges: 36 Vertices: 24</p>	
		

Prism:

A general prism is a polyhedron possessing two congruent polygonal faces and with all remaining faces parallelograms.

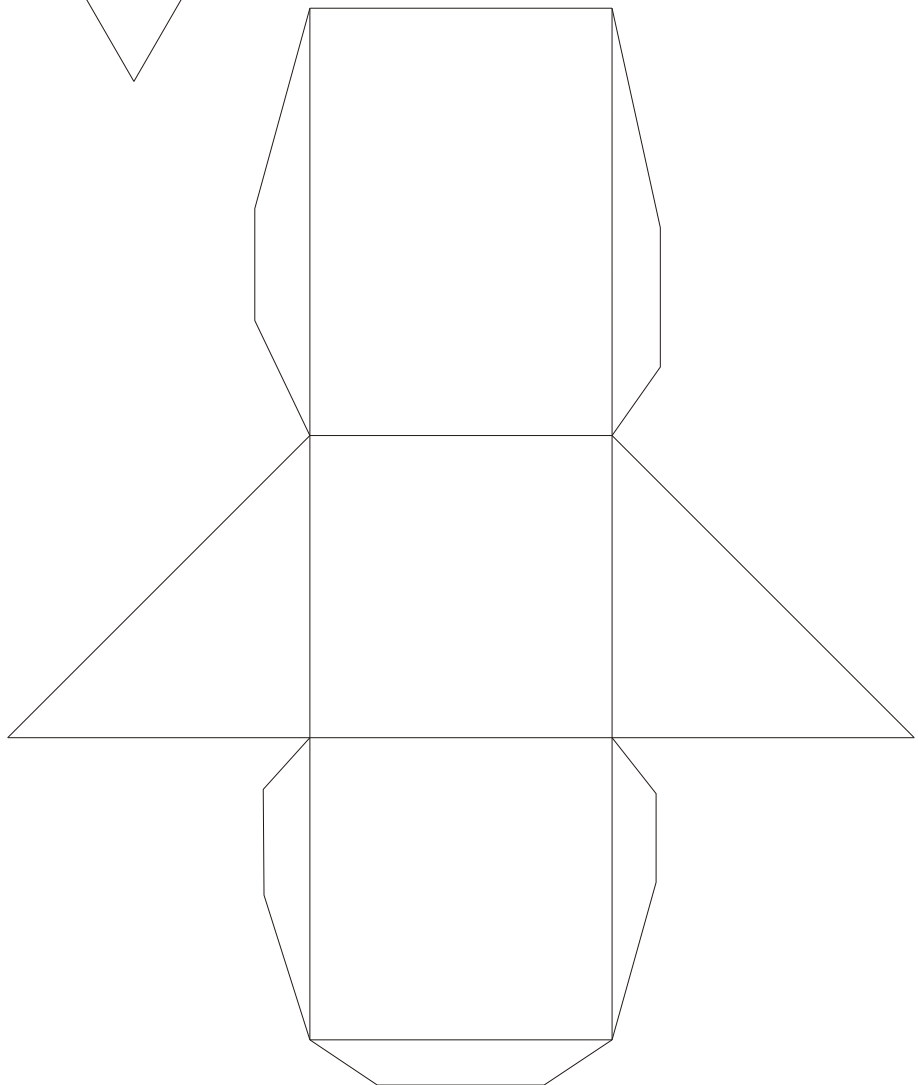
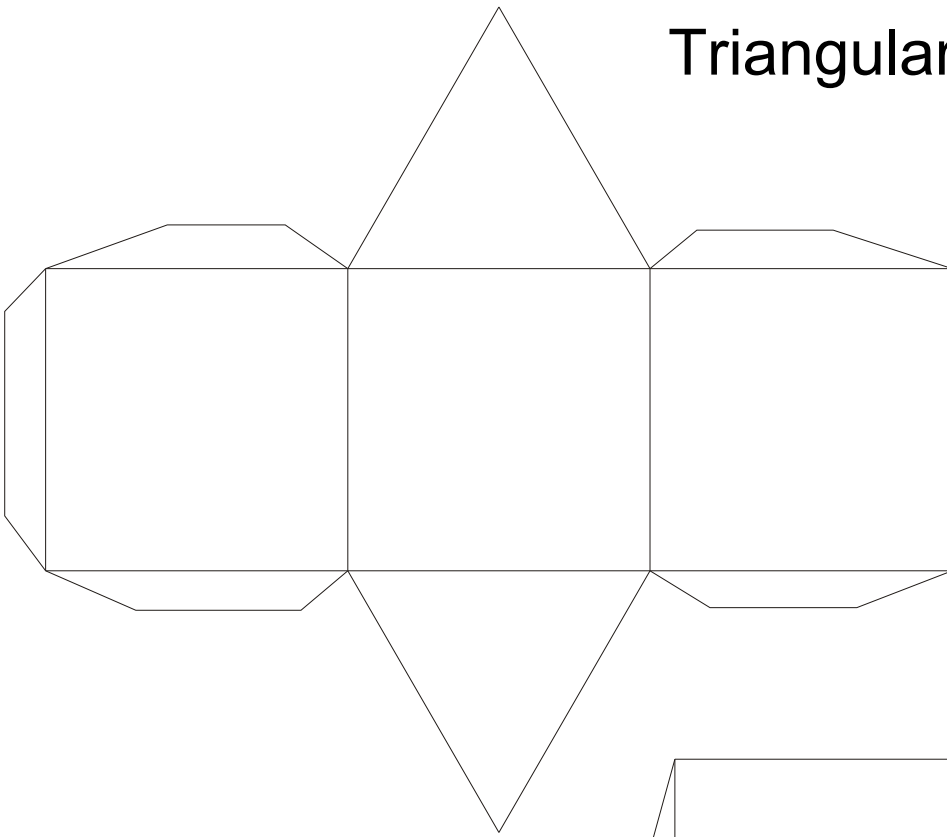
A right prism is a prism in which the top and bottom polygons lie on top of each other so that the vertical polygons connecting their sides are not only parallelograms, but rectangles. A prism that is not a right prism is known as an oblique prism. If, in addition, the upper and lower bases are rectangles, then the prism is known as a cuboid.

A polyhedron (plural: polyhedra) is a three - dimensional figure made up of sides called faces, each face being a polygon.

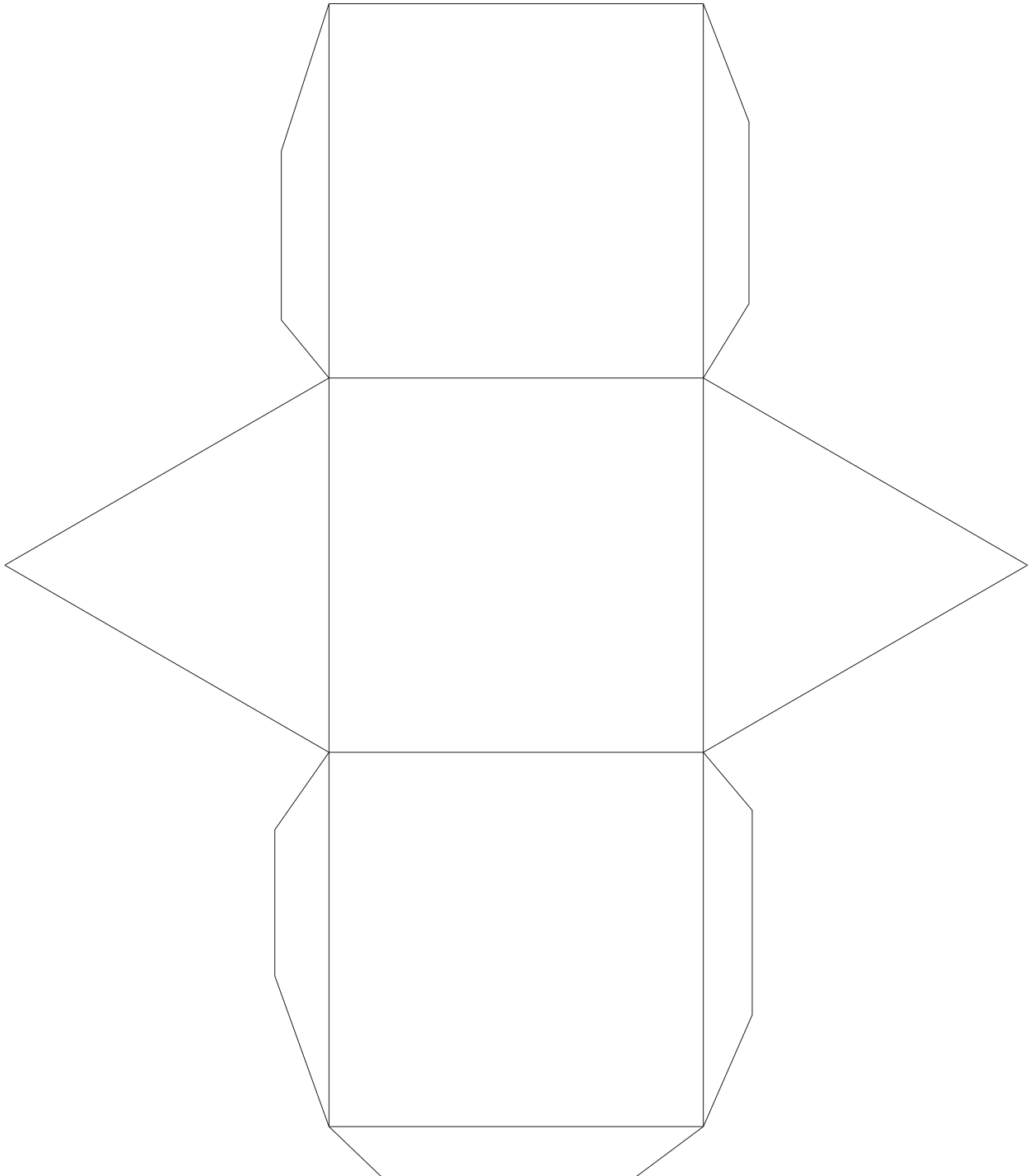
A polygon is a two dimensional figure made up of line segments called edges, that are connected two at a time at their endpoints. In a polyhedron, several polygonal faces meet at a corner (vertex).

All prisms in this document are right prisms.

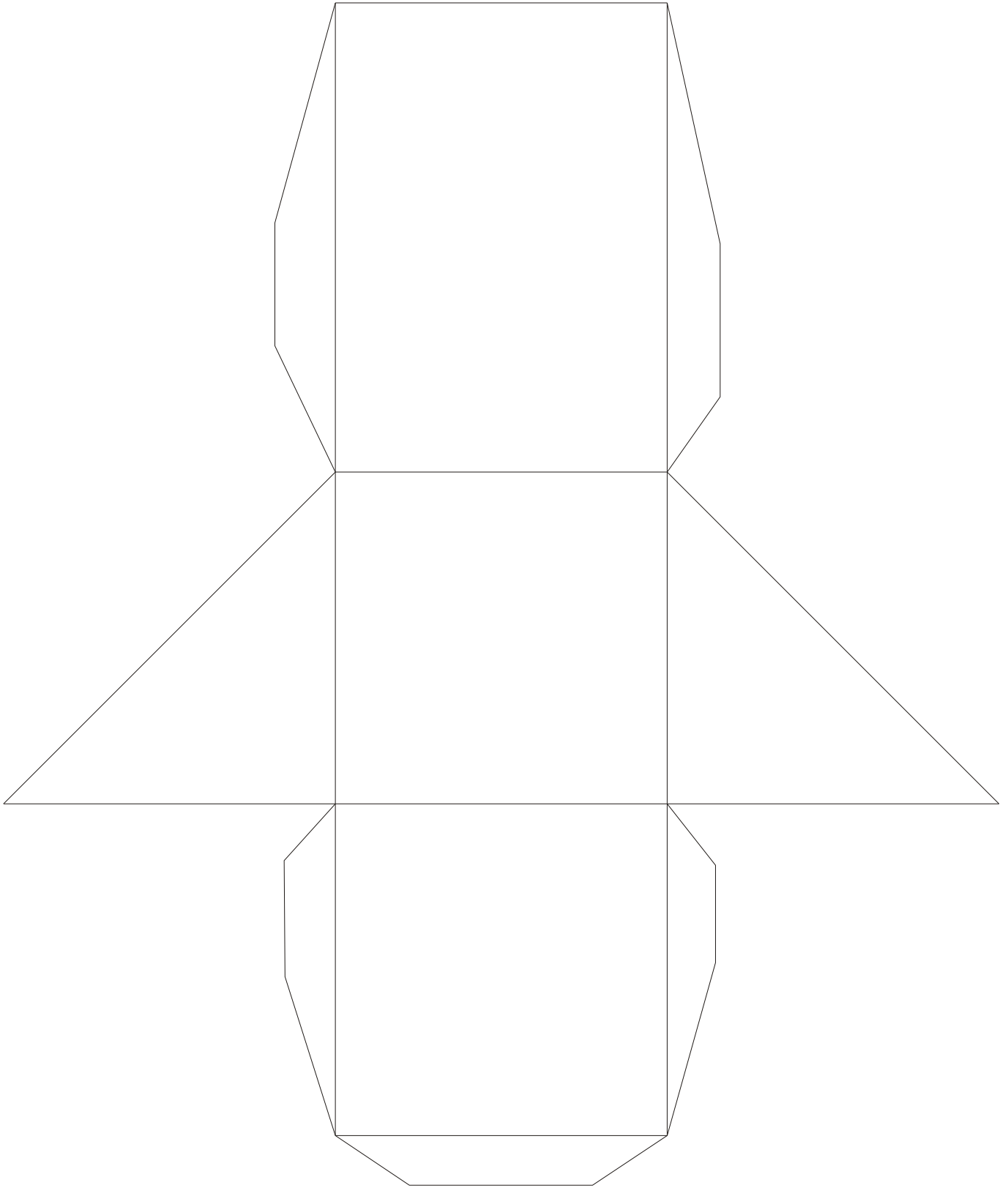
Triangular prisms



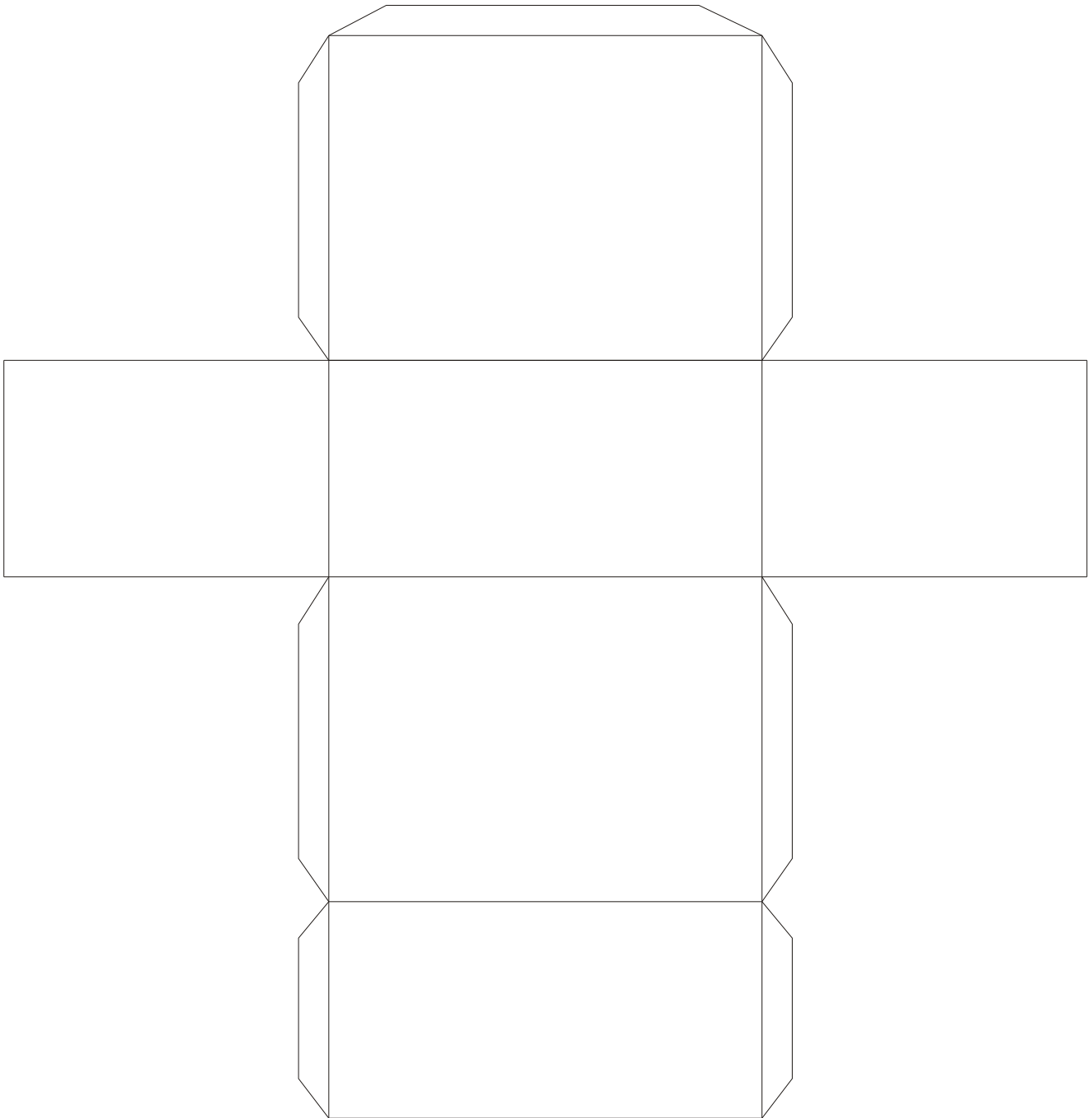
Triangular prism



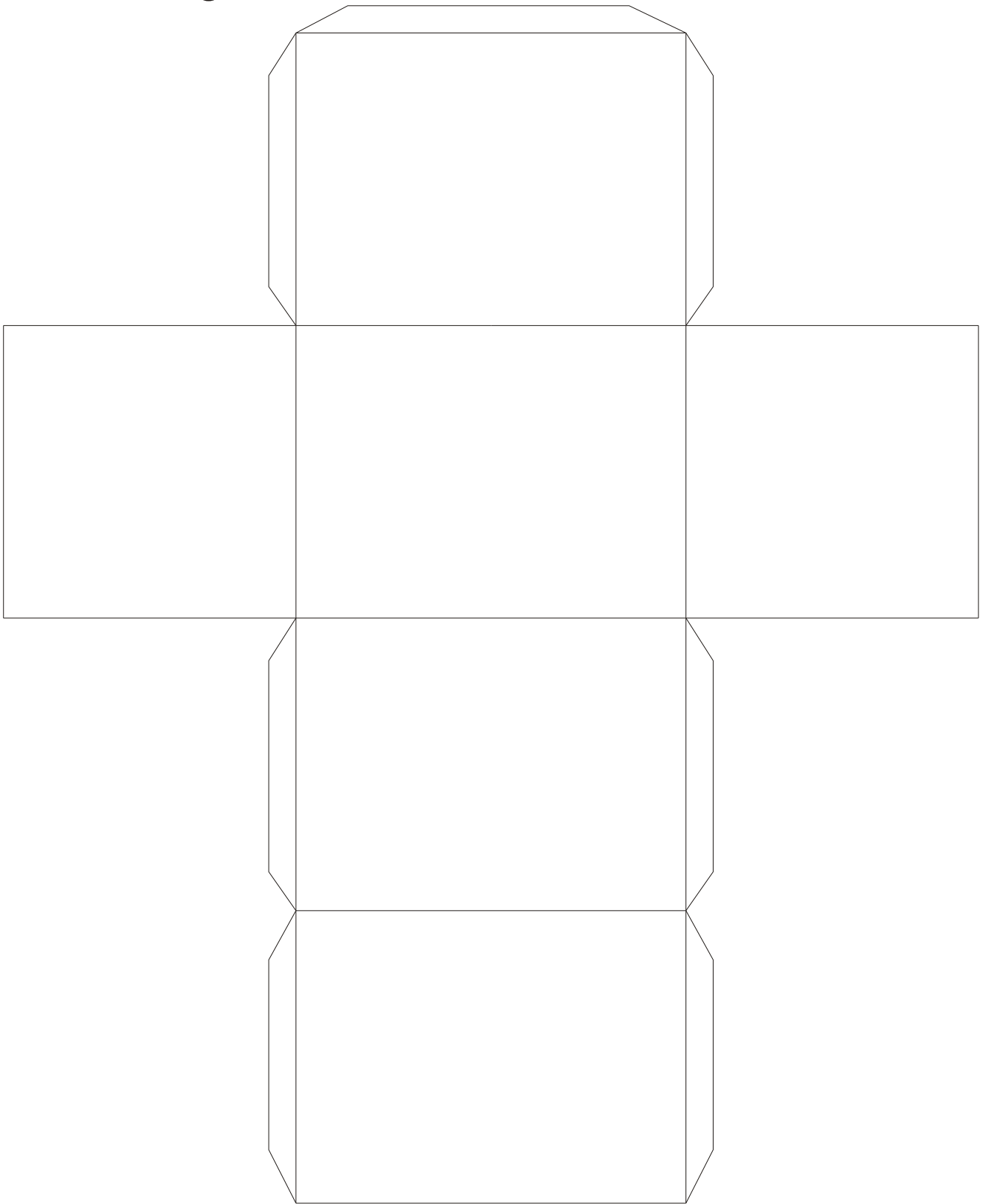
Triangular prism



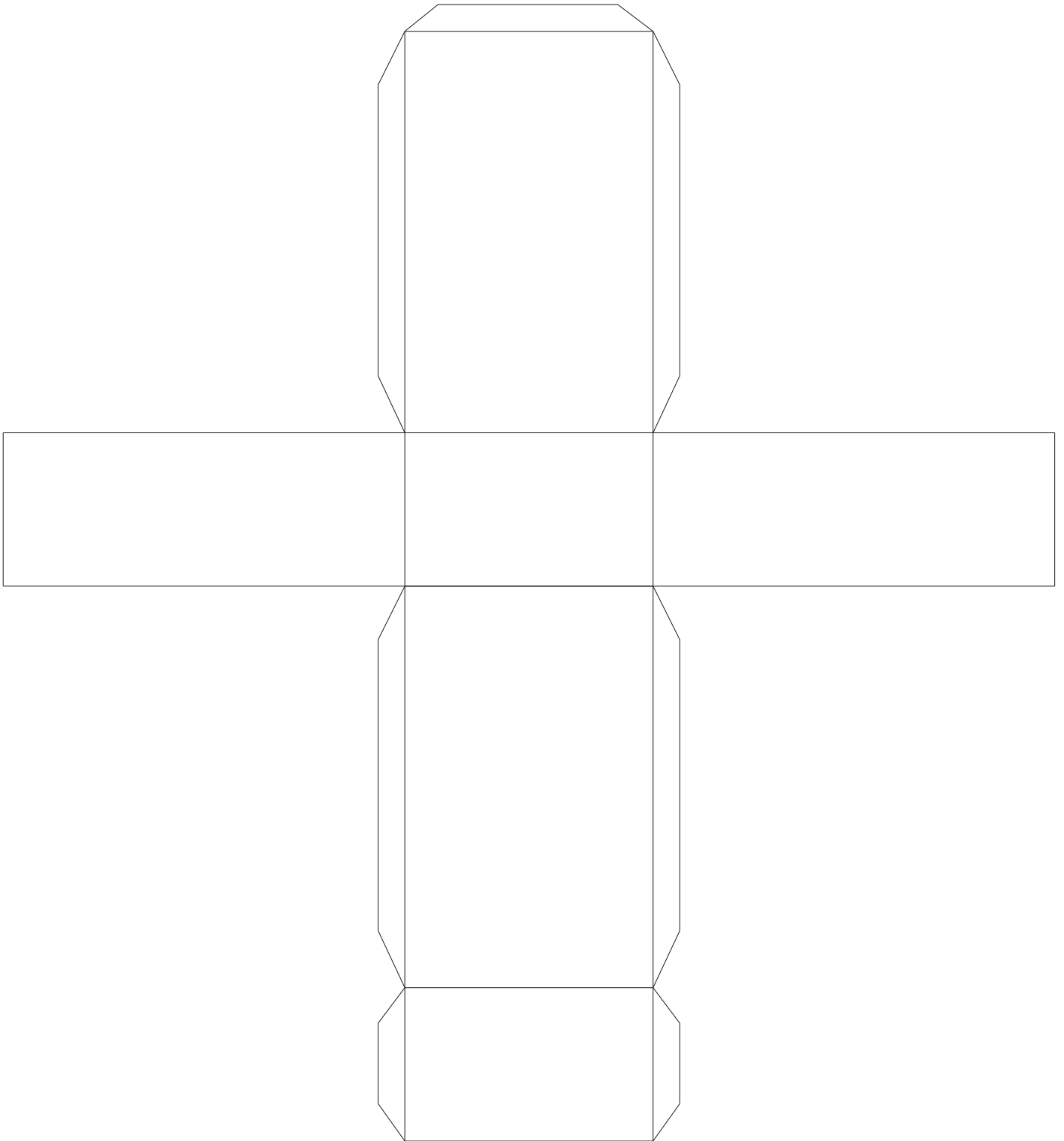
Rectangular Prism



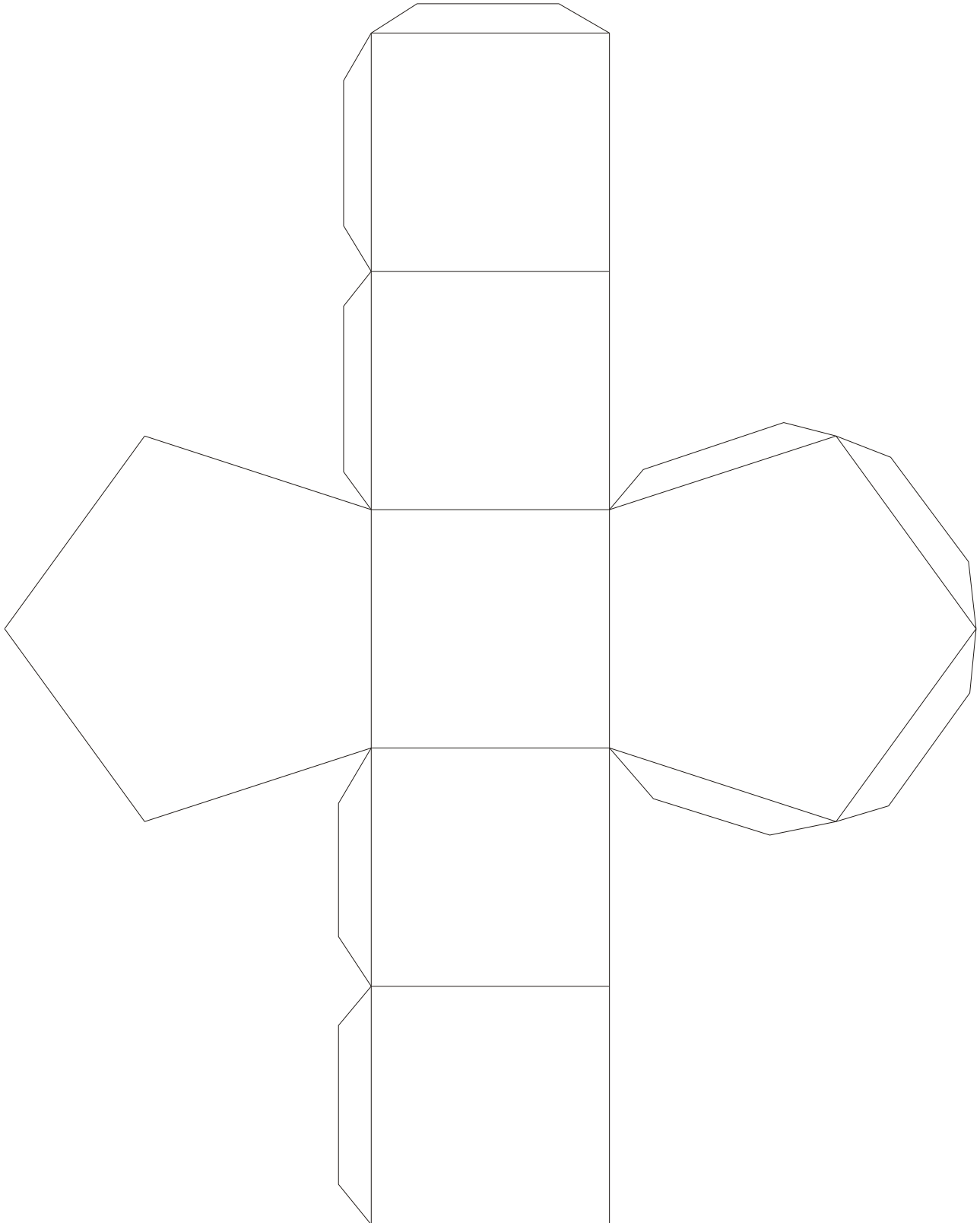
Rectangular Prism



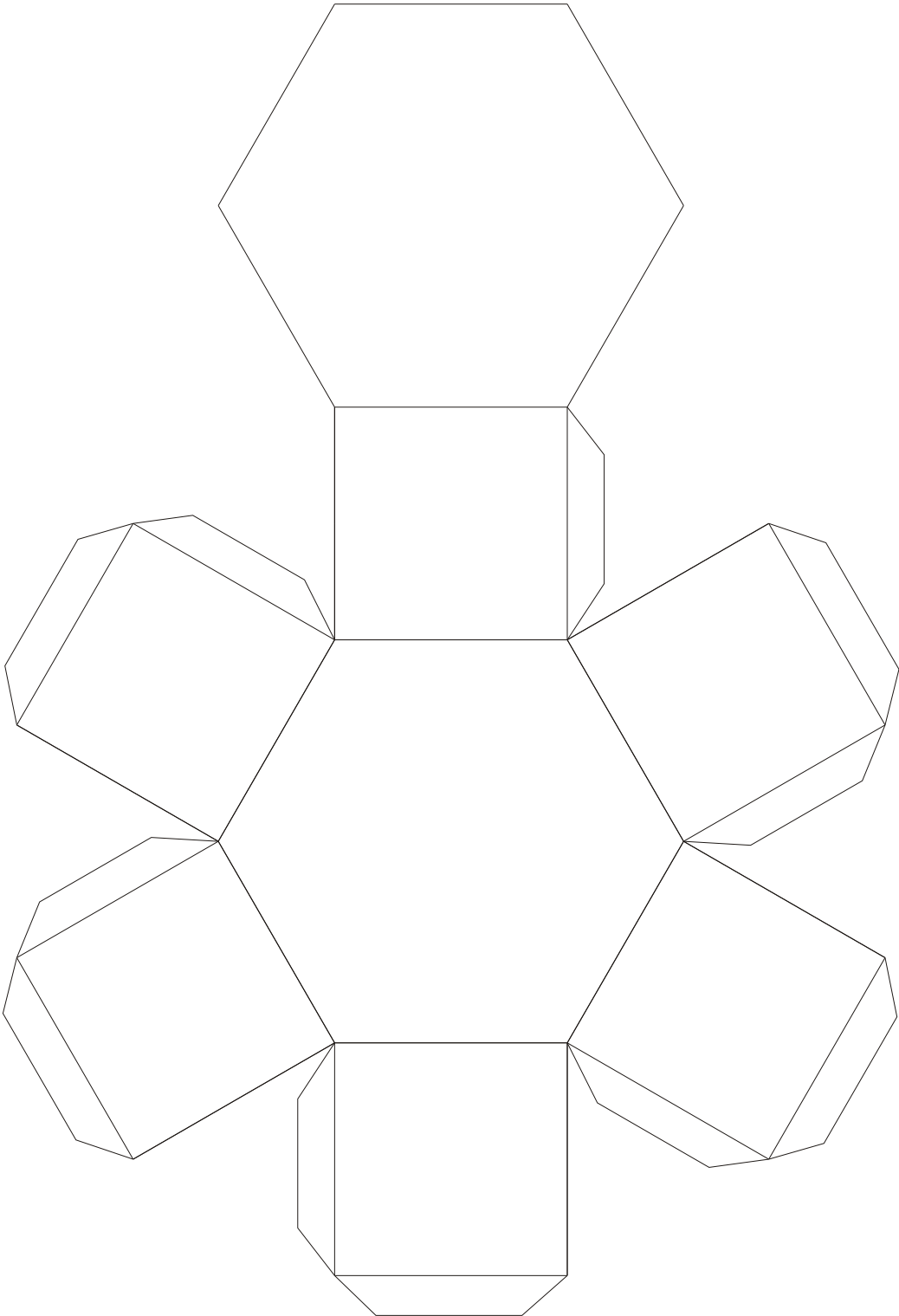
Rectangular Prism



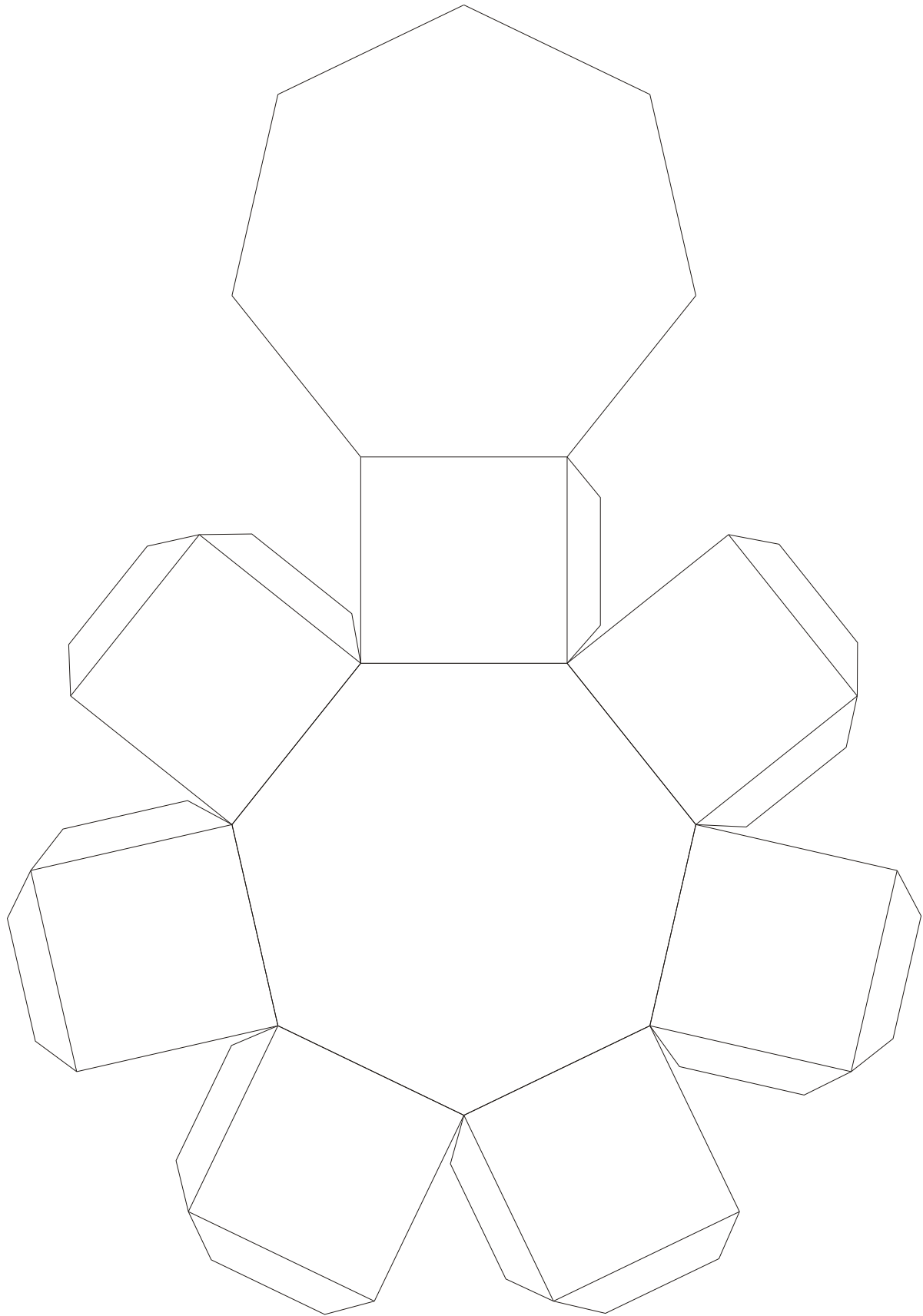
Pentagonal Prism



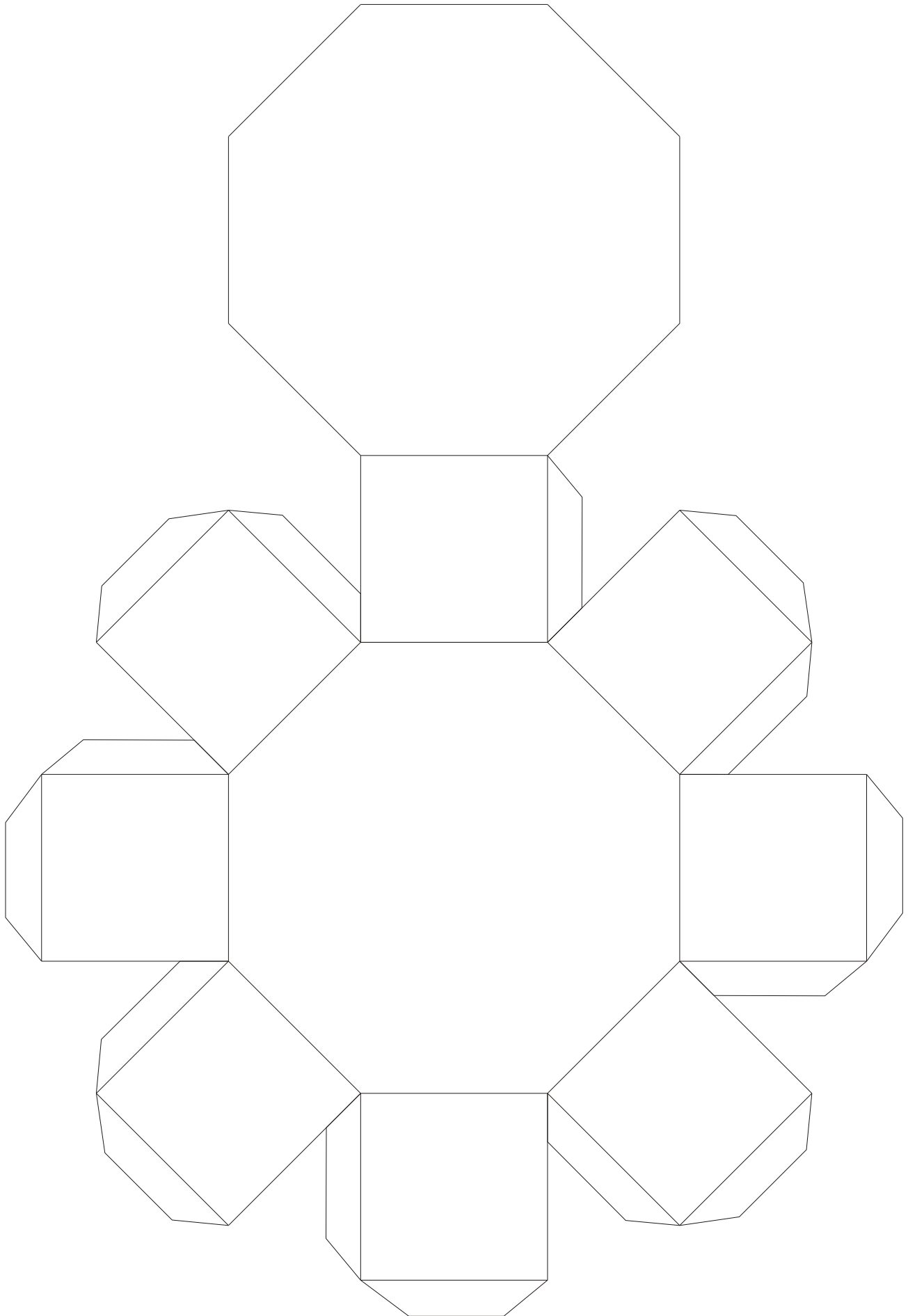
Hexagonal Prism



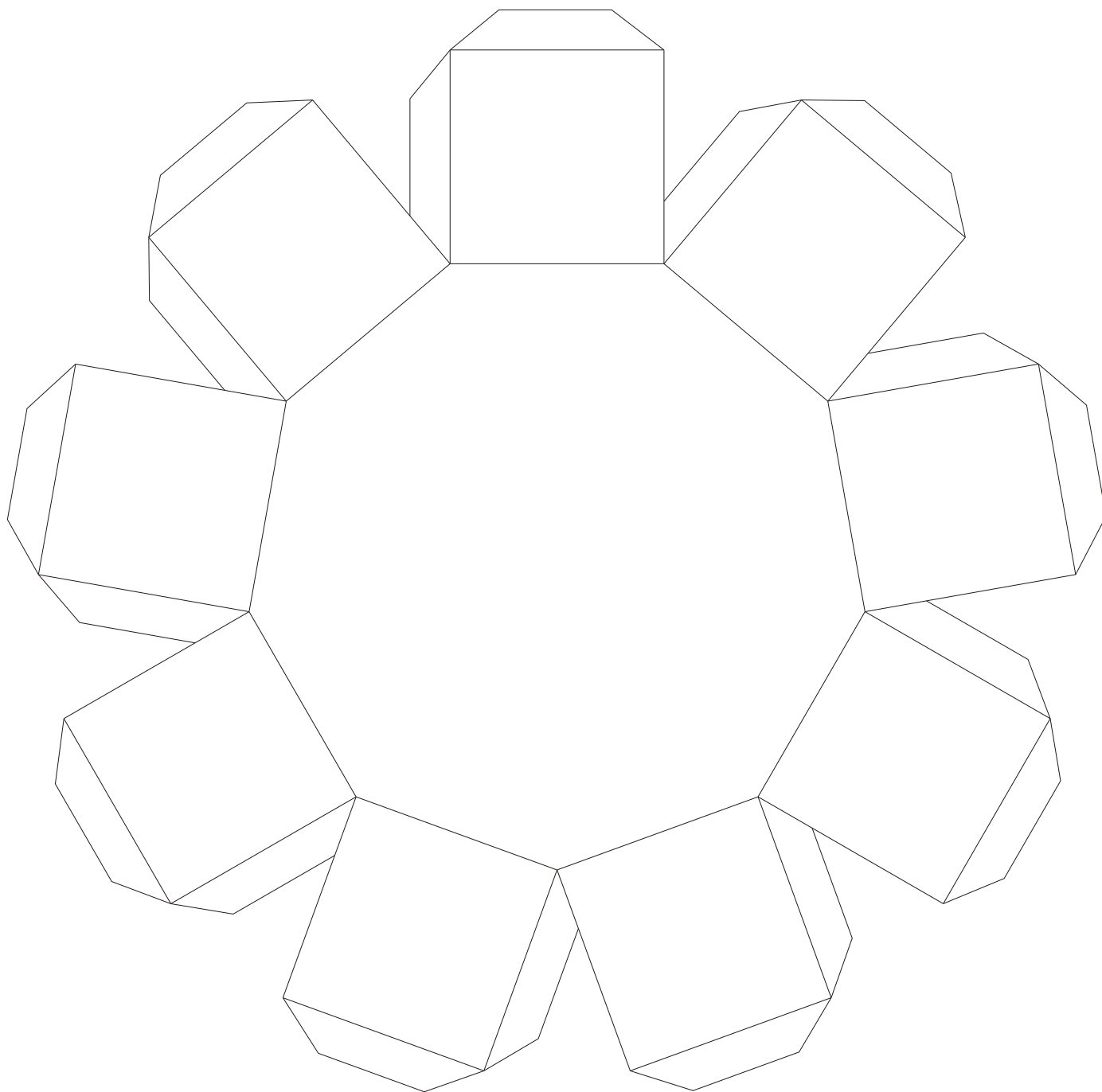
Heptagonal Prism



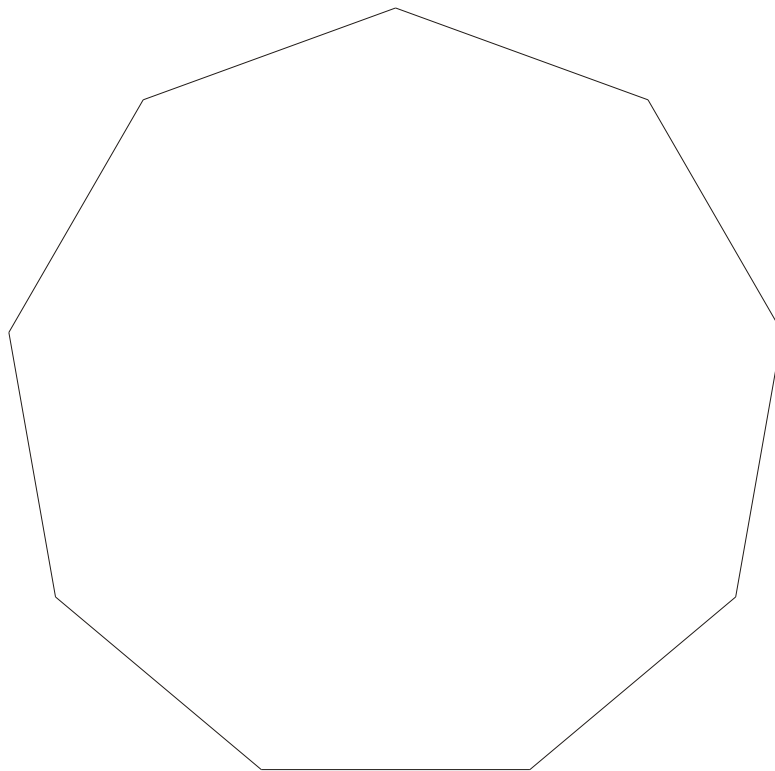
Octagonal Prism



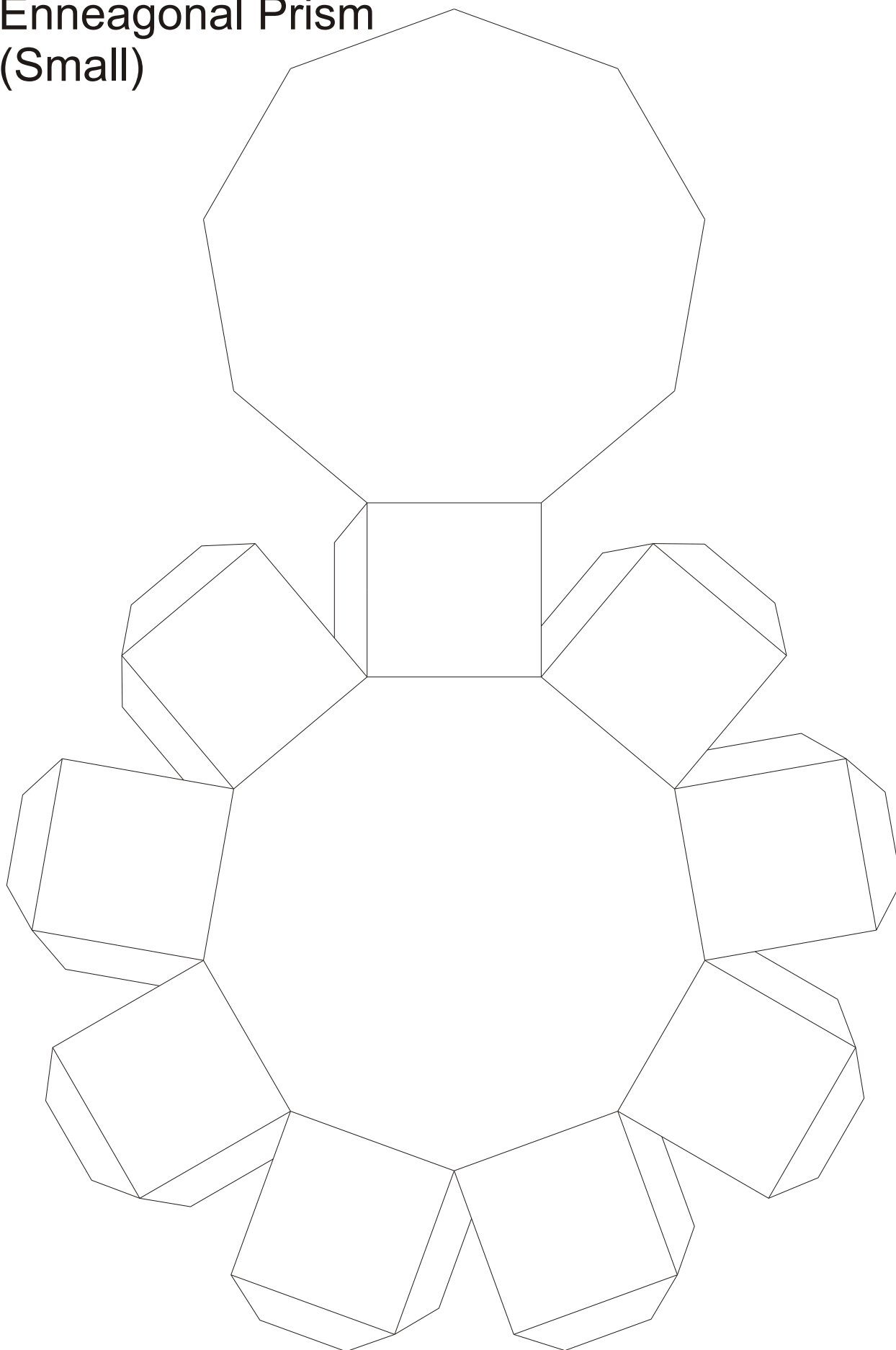
Enneagonal Prism (Part 1)



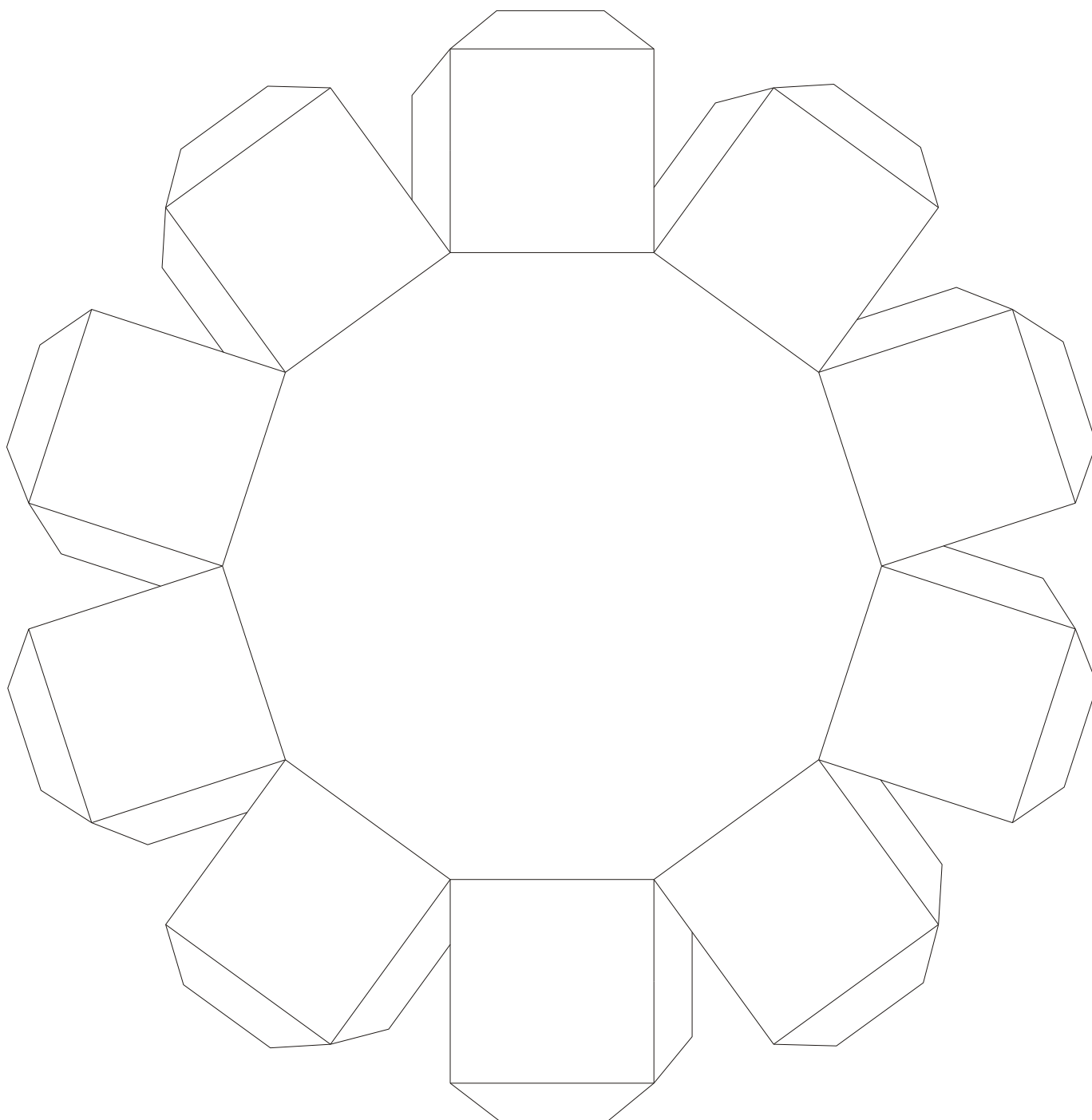
Enneagonal Prism (Part 2)



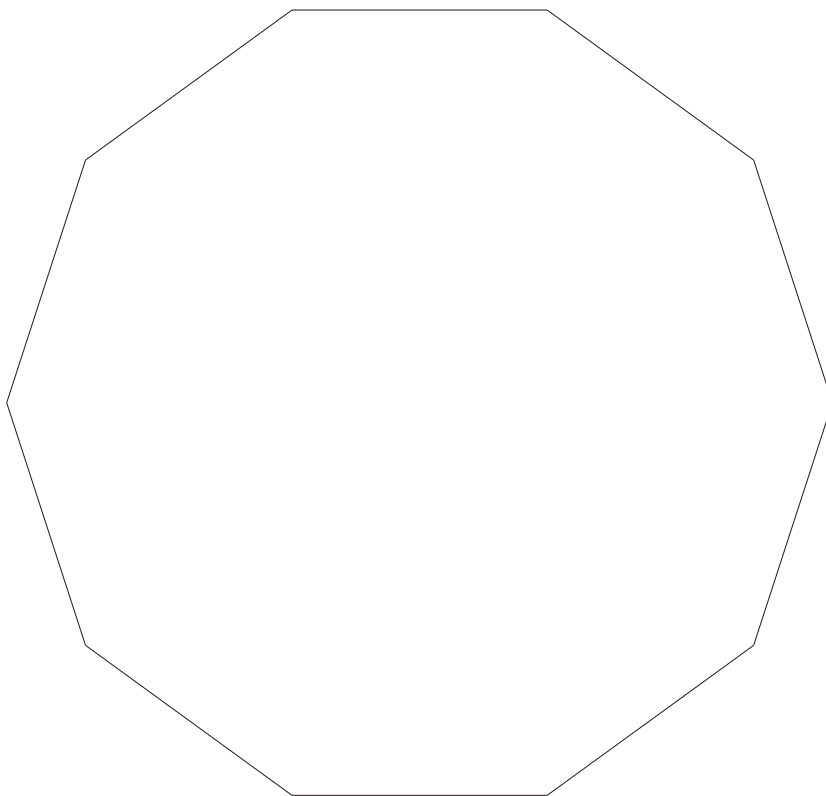
Enneagonal Prism (Small)



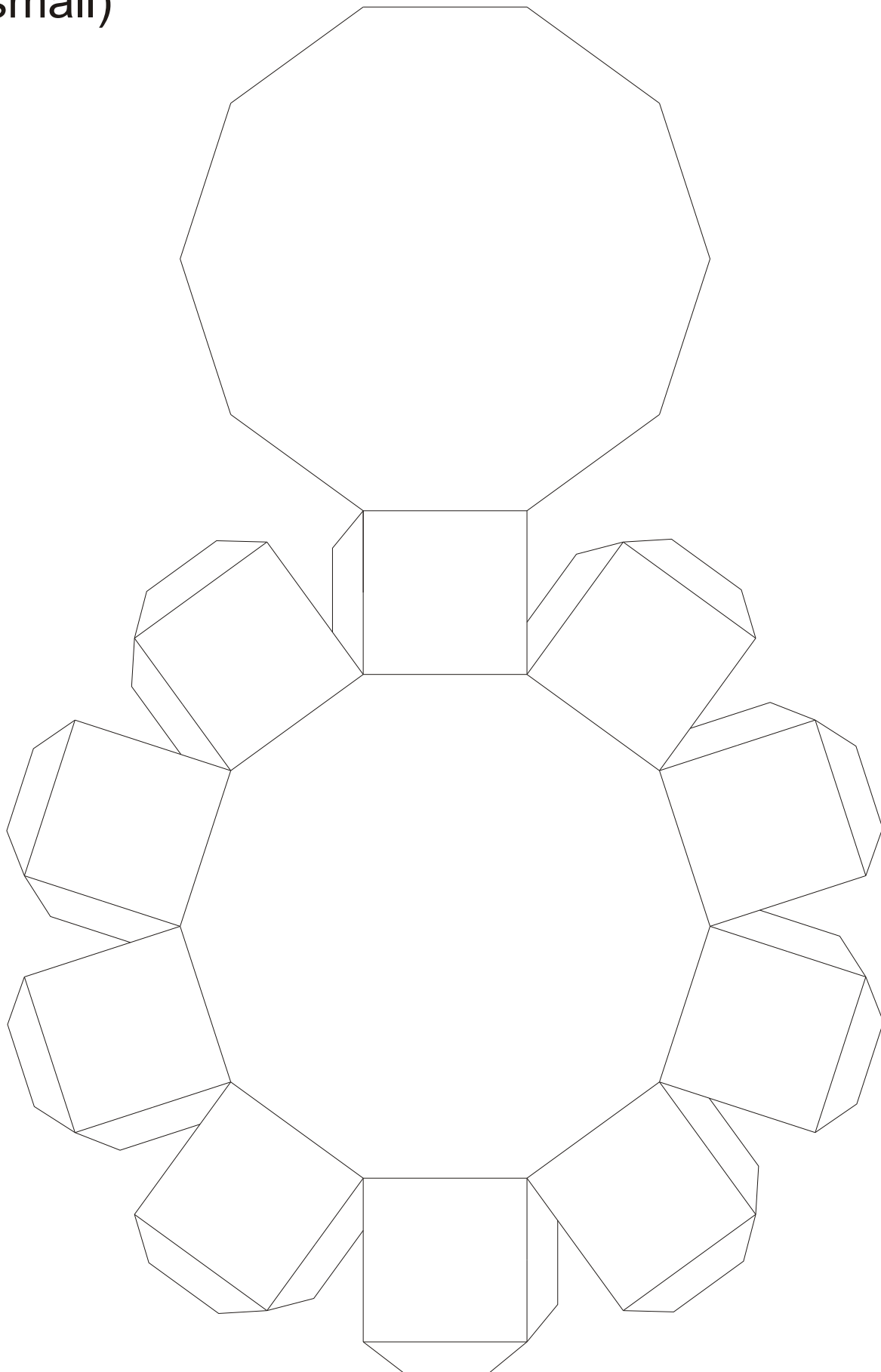
Decagonal Prism (Part 1)



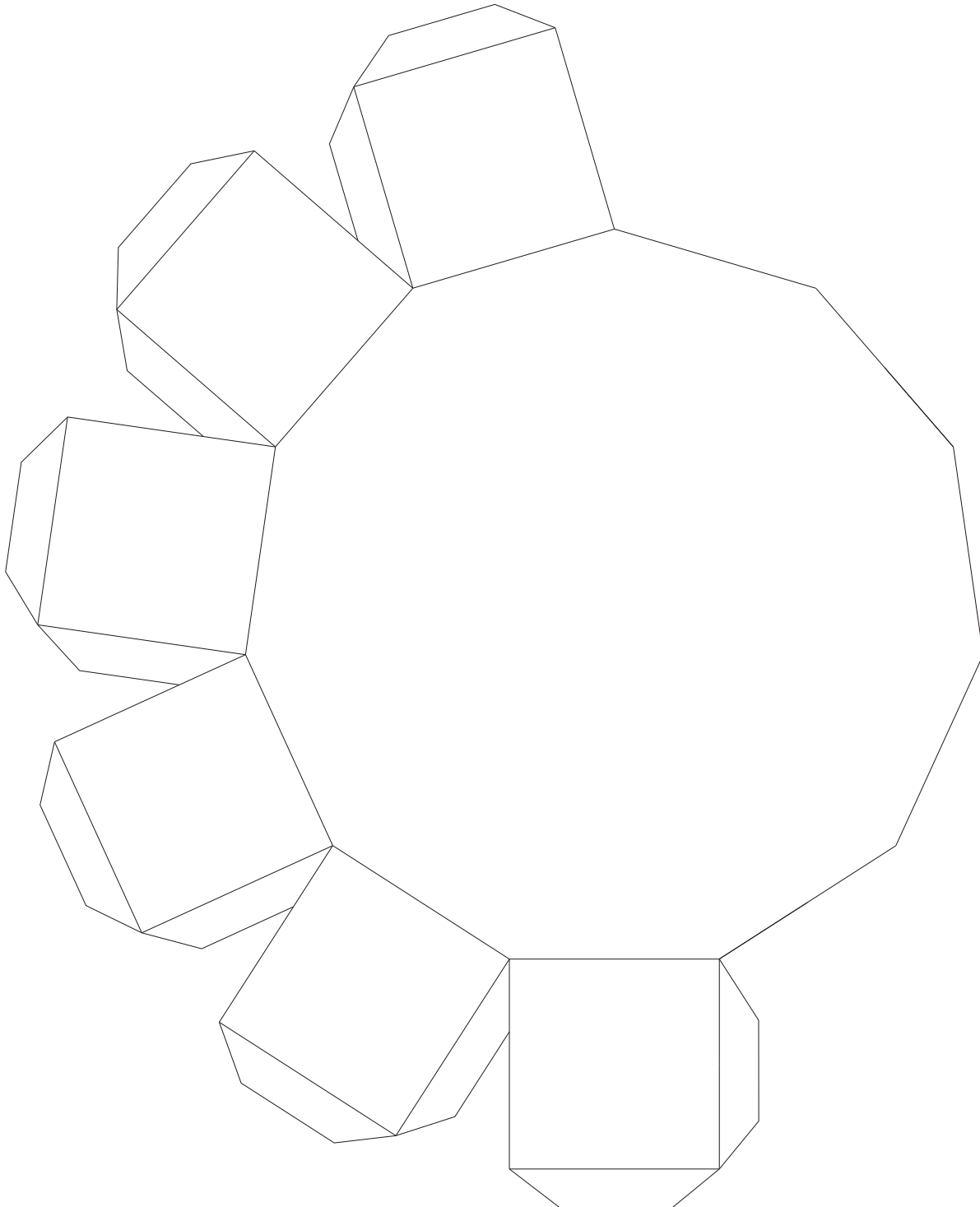
Decagonal Prism (Part 2)



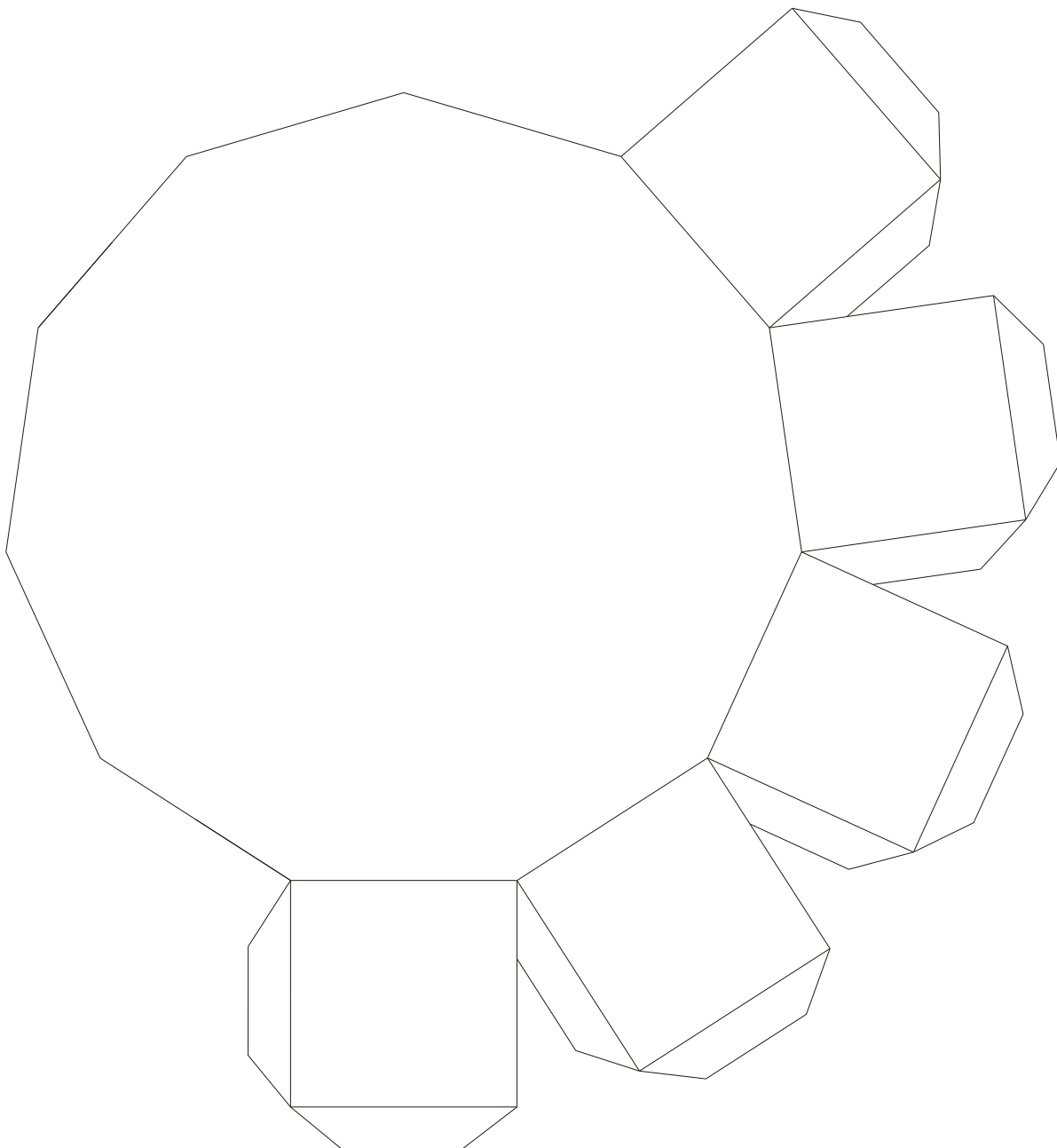
Decagonal Prism (small)



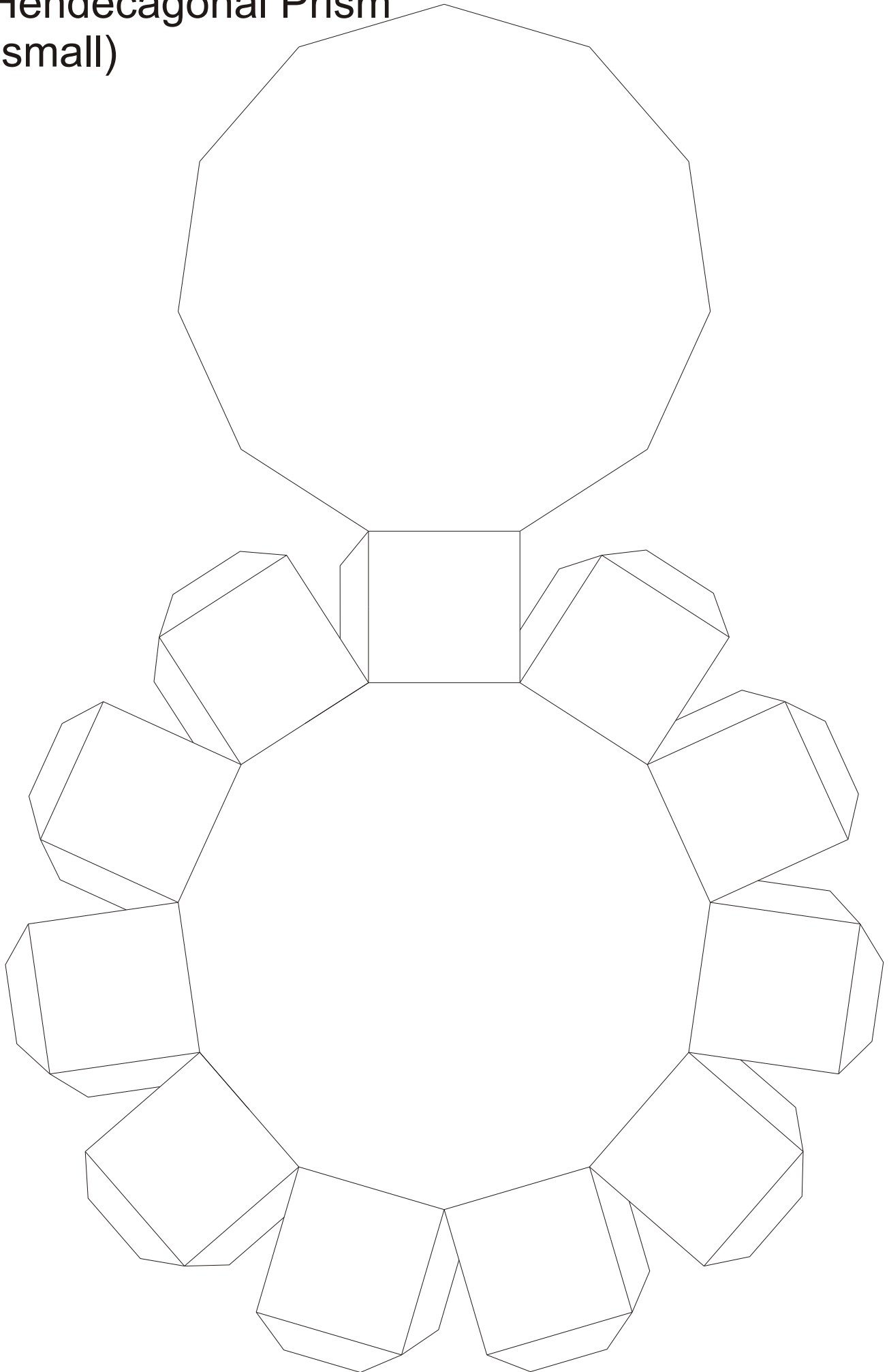
Hendecagonal Prism (Part 1)



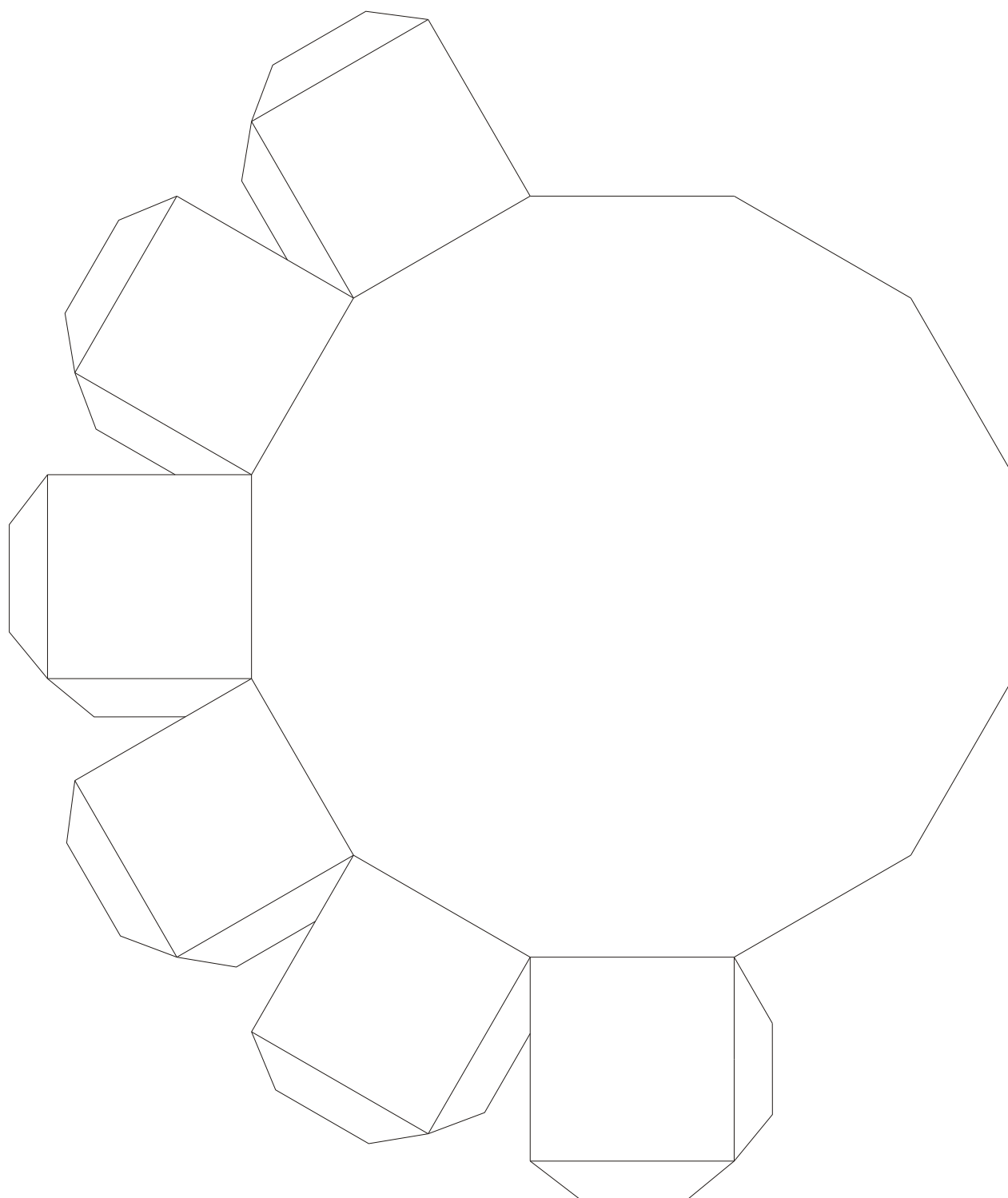
Hendecagonal Prism (Part 2)



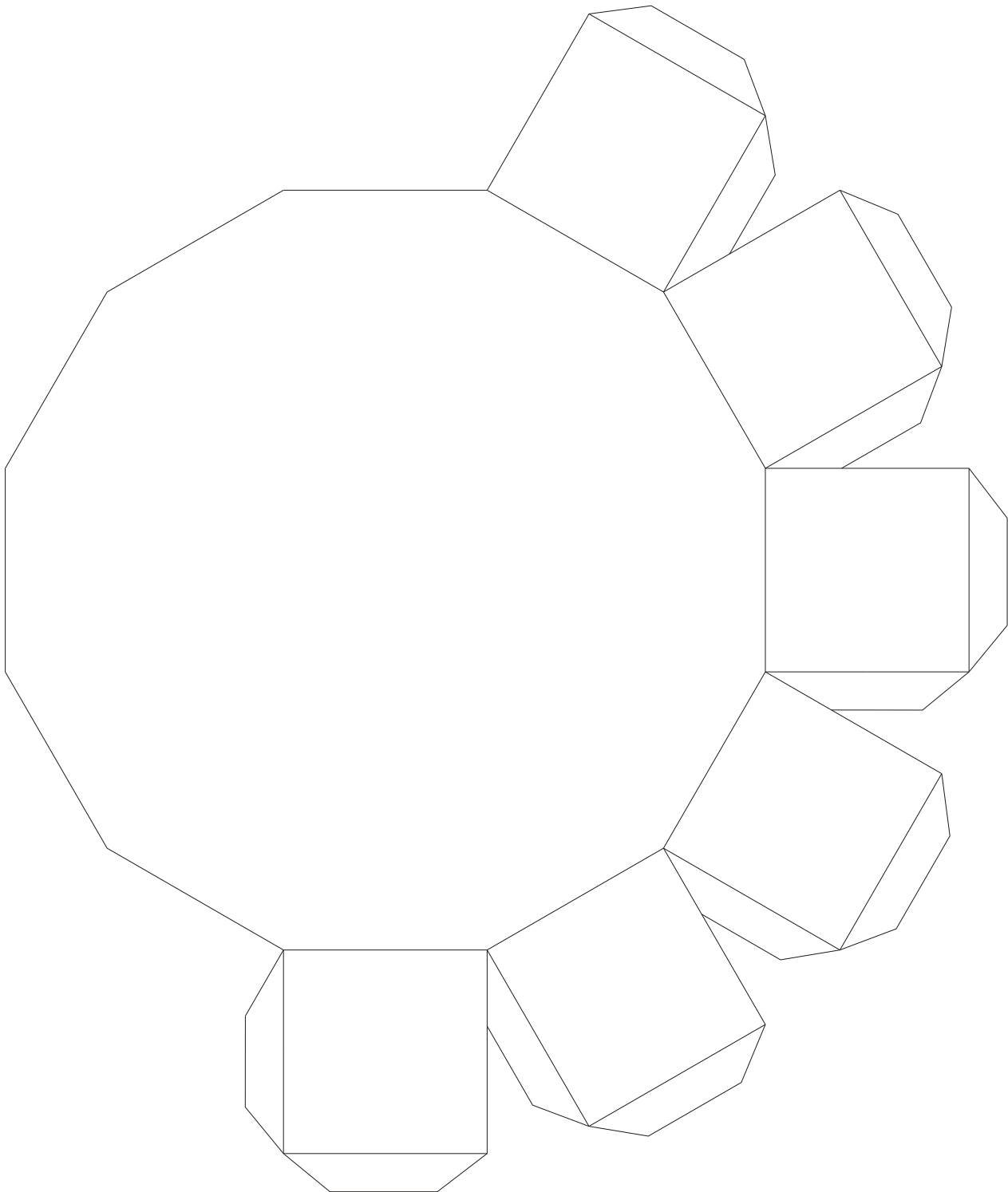
Hendecagonal Prism (small)



Dodecagonal Prism (Part 1)



Dodecagonal Prism (Part 2)



Dodecagonal Prism (small version)

