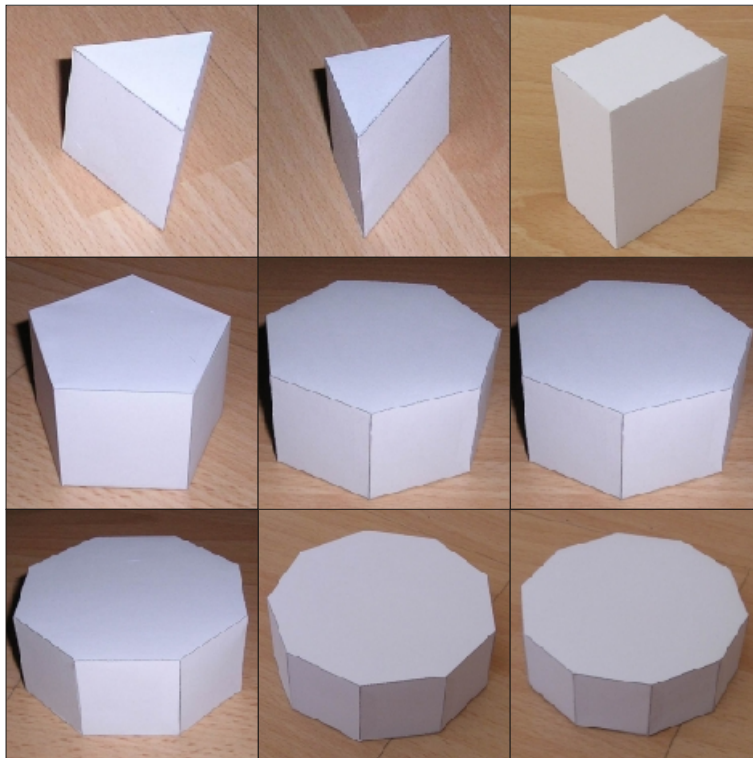


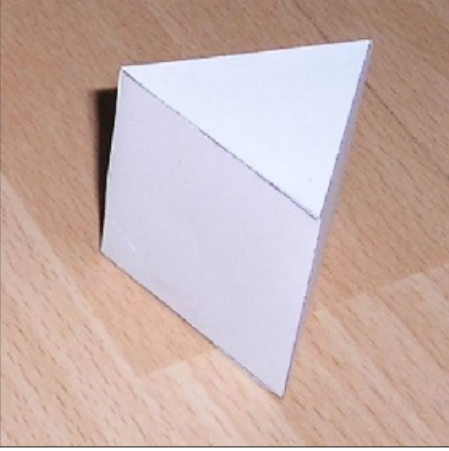
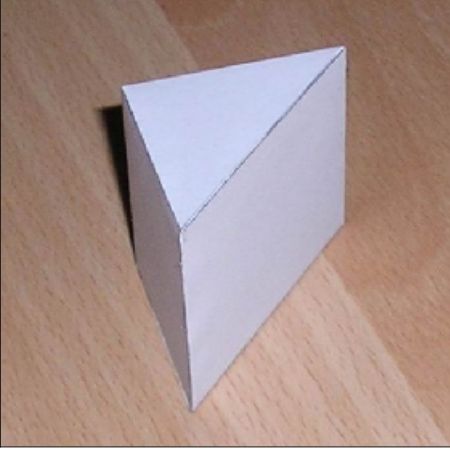
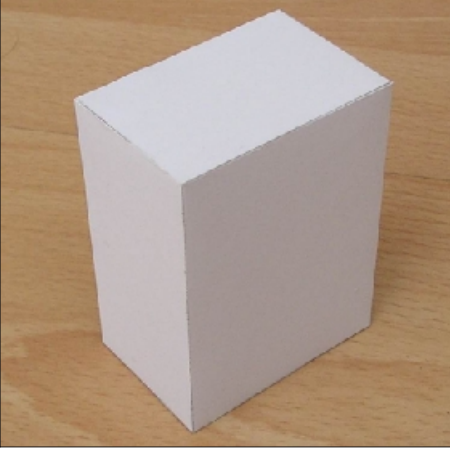
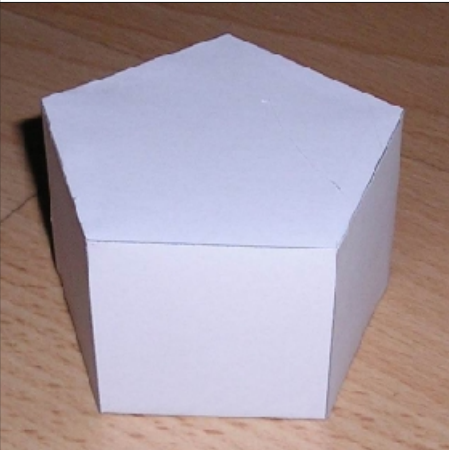
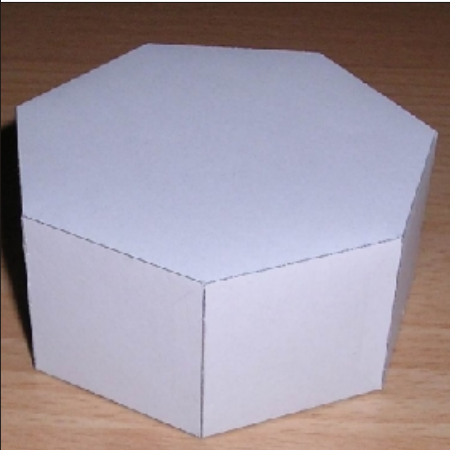
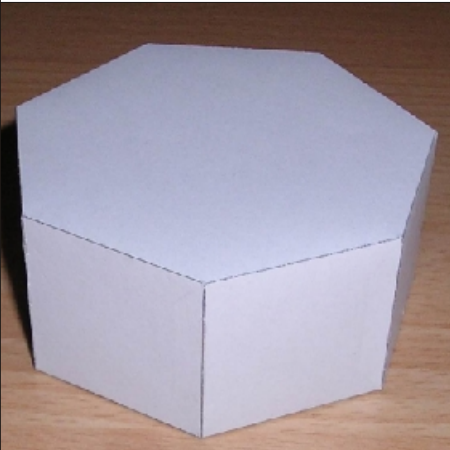

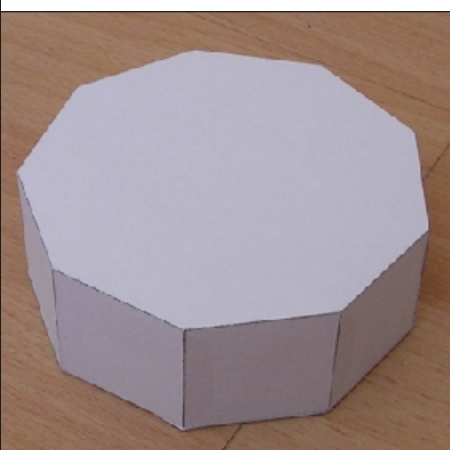

# Paper Models of Prisms

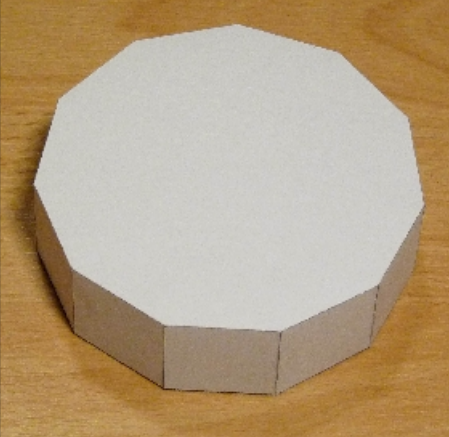
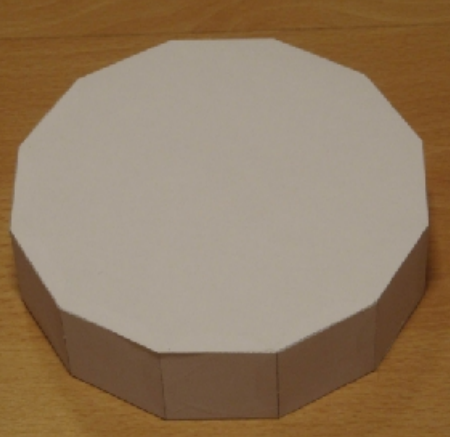
Gijs Korthals Altes



[www.korthalsaltes.com](http://www.korthalsaltes.com)



<p>Triangular Prism Faces: 5 Edges: 9 Vertices: 6</p>	<p>Triangular Prism Faces: 5 Edges: 9 Vertices: 6</p>	<p>Rectangular Prism Faces: 6 Edges: 12 Vertices: 8</p>
		
<p>Pentagonal Prism Faces: 7 Edges: 15 Vertices: 10</p>	<p>Hexagonal Prism Faces: 8 Edges: 18 Vertices: 12</p>	<p>Heptagonal Prism Faces: 9 Edges: 21 Vertices: 14</p>
		
<p>Octagonal Prism Faces: 10 Edges: 24 Vertices: 16</p>	<p>Enneagonal Prism Faces: 11 Edges: 27 Vertices: 18</p>	<p>Decagonal Prism Faces: 12 Edges: 30 Vertices: 20</p>
		

<p><b>Hendecagonal Prism</b>  Faces: 13 Edges: 33 Vertices: 22</p>	<p><b>Dodecagonal Prism</b>  Faces: 14 Edges: 36 Vertices: 24</p>	
		

### **Prism:**

A general prism is a polyhedron possessing two congruent polygonal faces and with all remaining faces parallelograms.

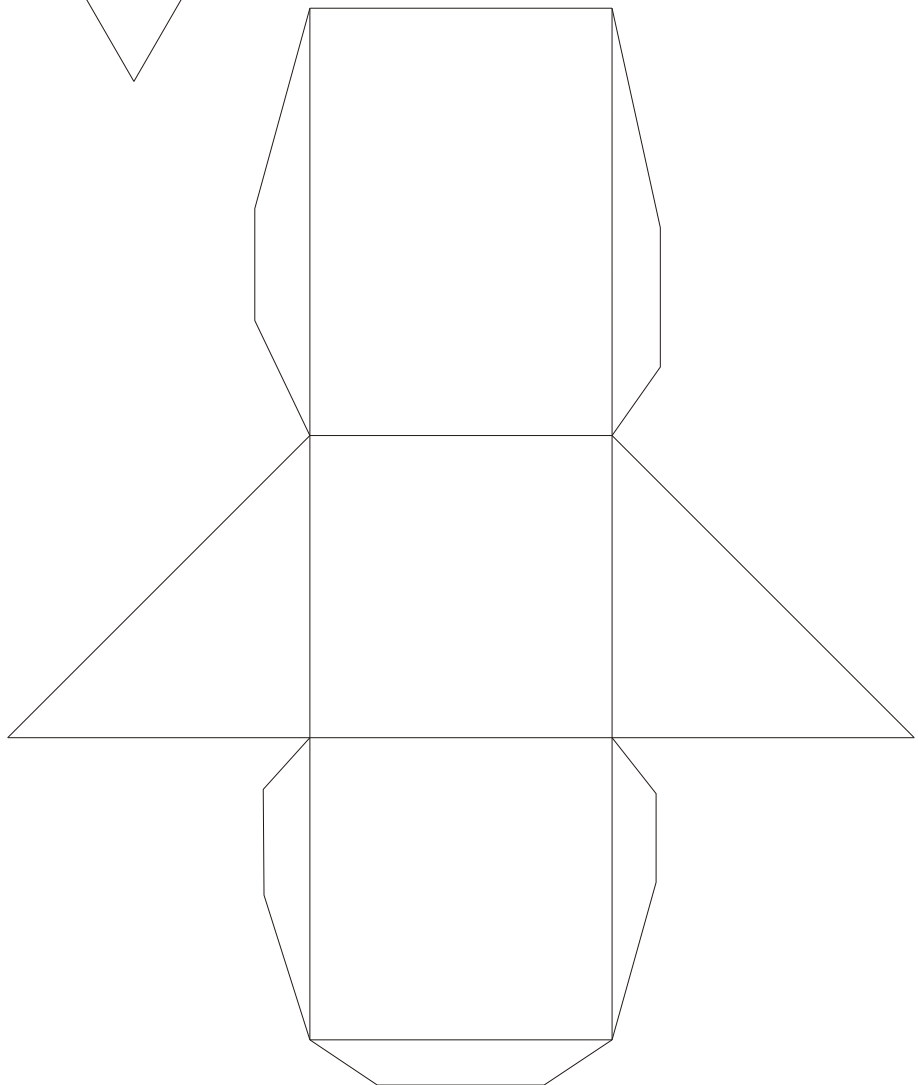
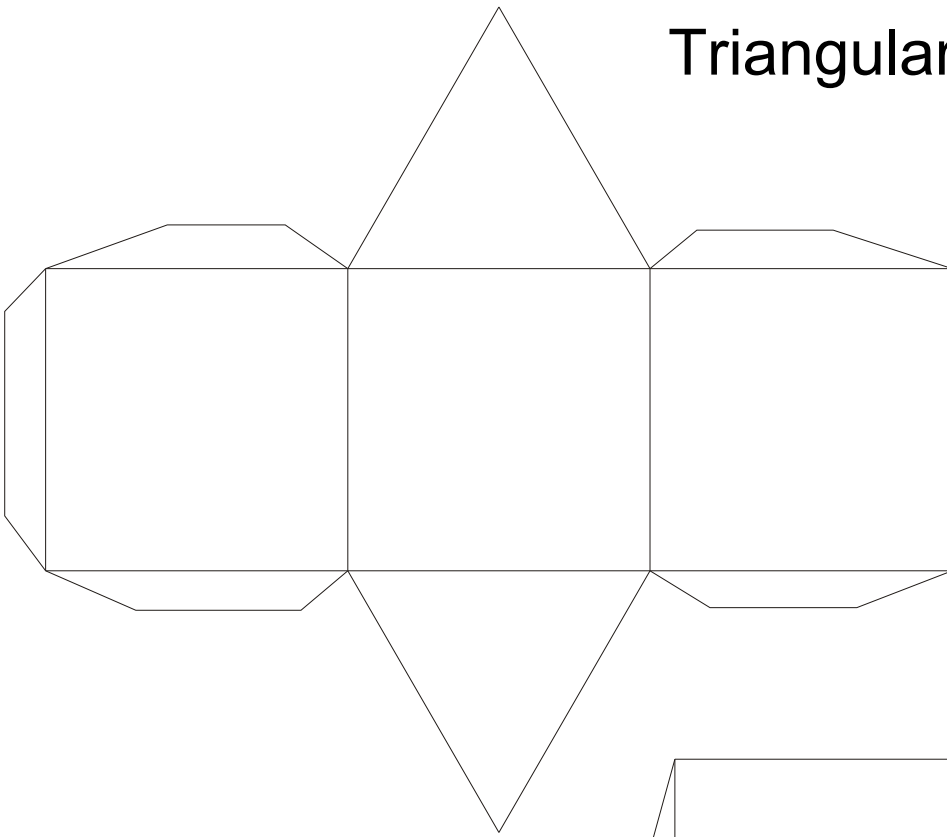
A right prism is a prism in which the top and bottom polygons lie on top of each other so that the vertical polygons connecting their sides are not only parallelograms, but rectangles. A prism that is not a right prism is known as an oblique prism. If, in addition, the upper and lower bases are rectangles, then the prism is known as a cuboid.

A polyhedron (plural: polyhedra) is a three - dimensional figure made up of sides called faces, each face being a polygon.

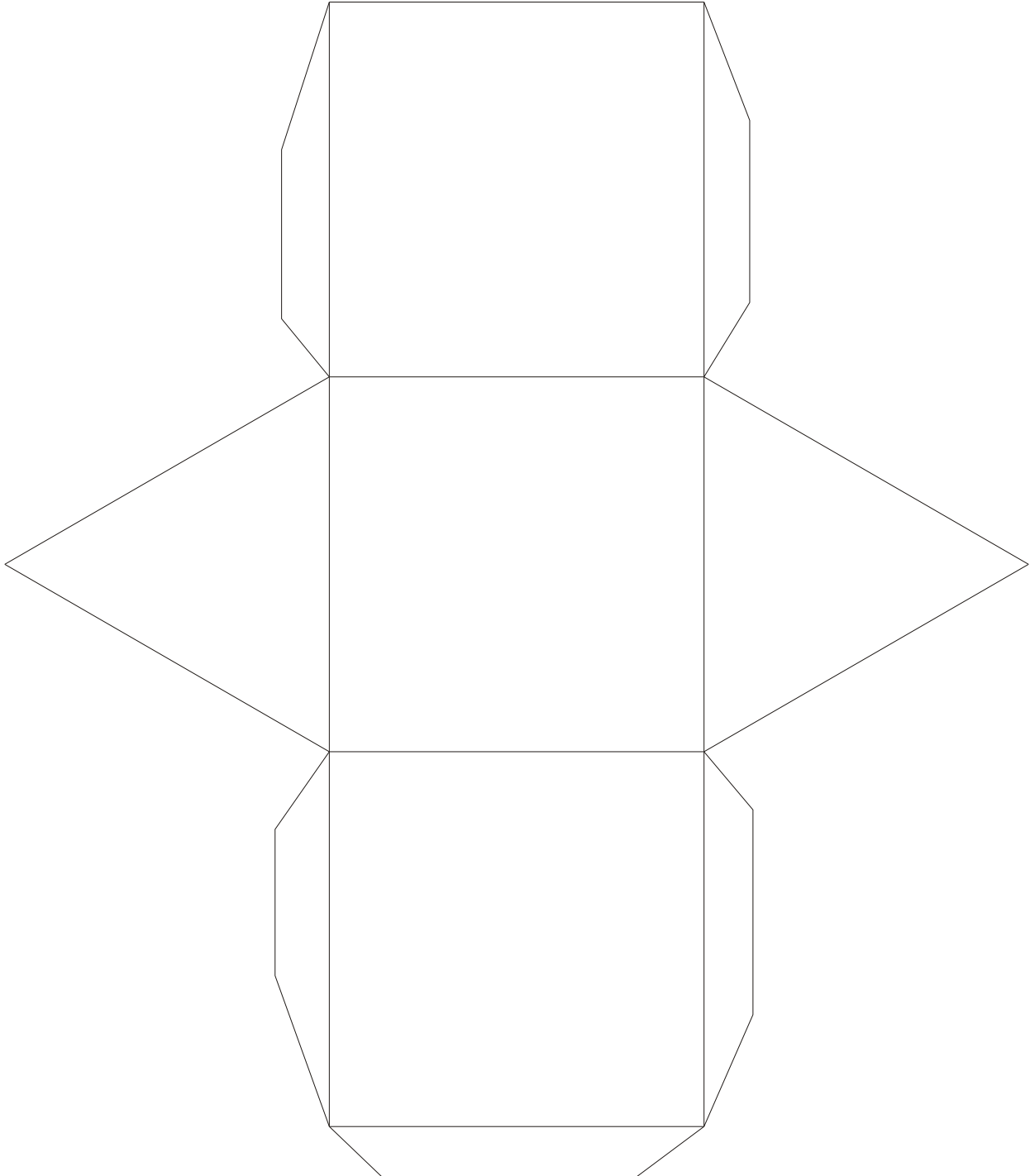
A polygon is a two dimensional figure made up of line segments called edges, that are connected two at a time at their endpoints. In a polyhedron, several polygonal faces meet at a corner (vertex).

All prisms in this document are right prisms.

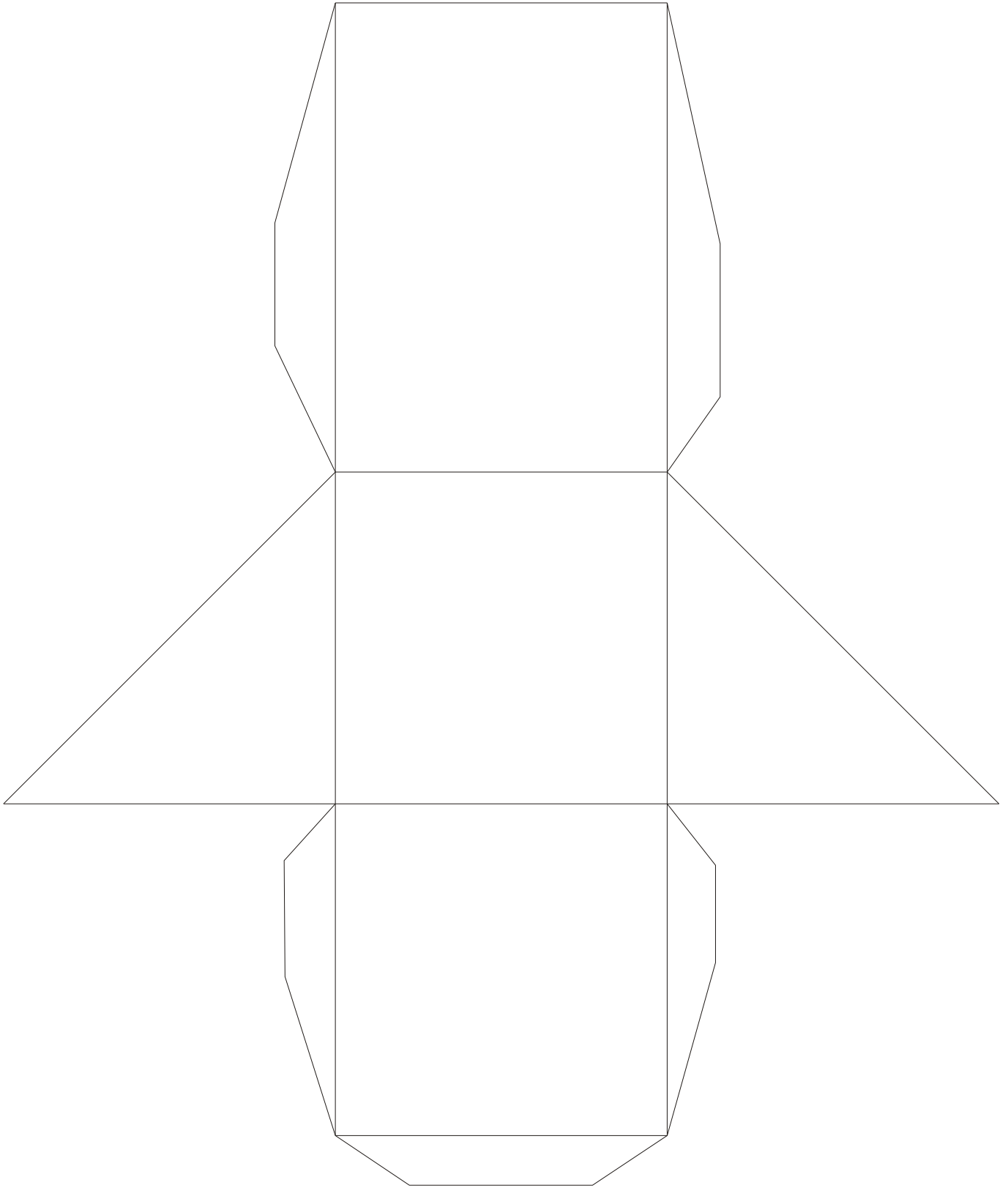
# Triangular prisms



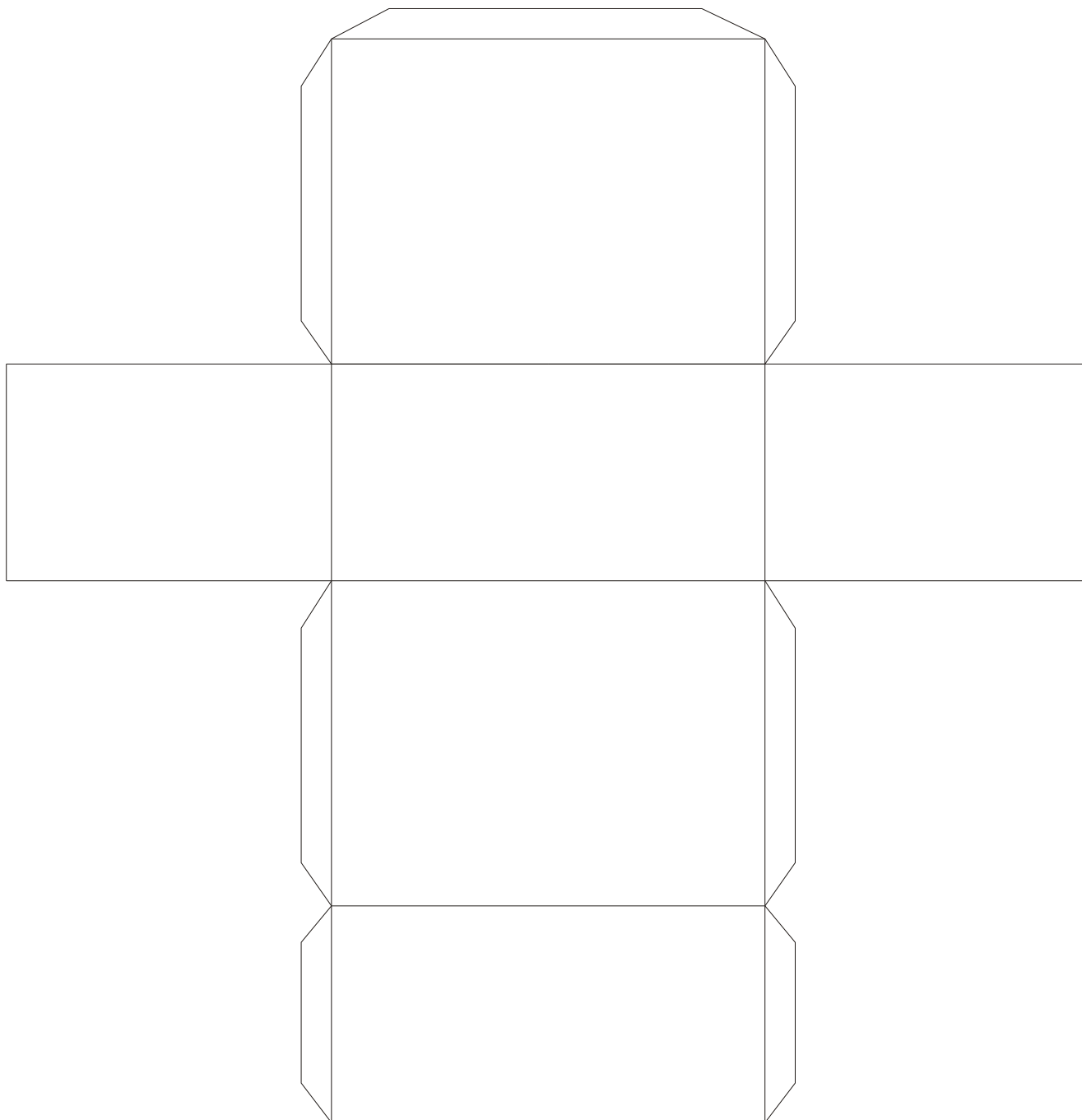
# Triangular prism



# Triangular prism

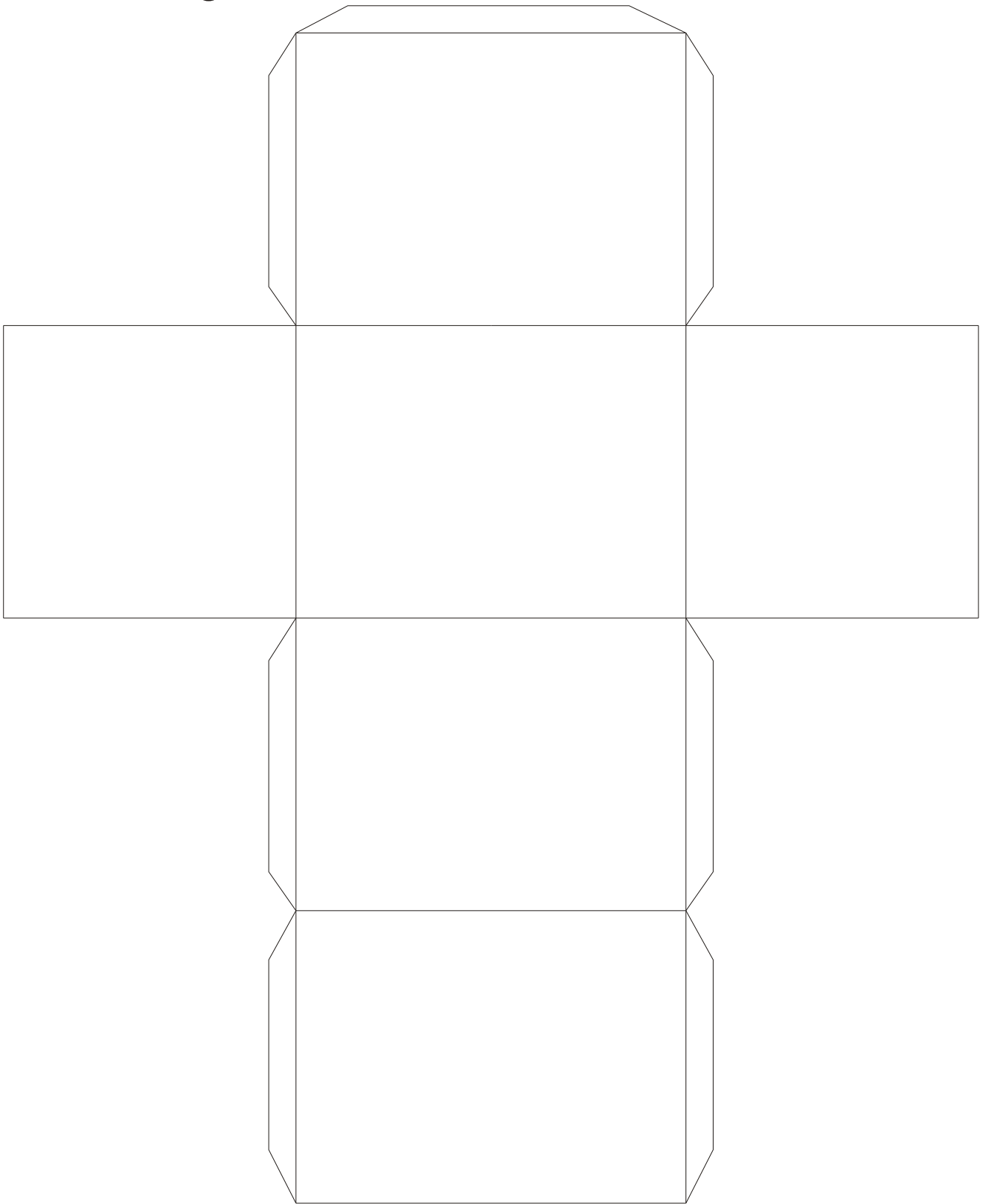


# Rectangular Prism

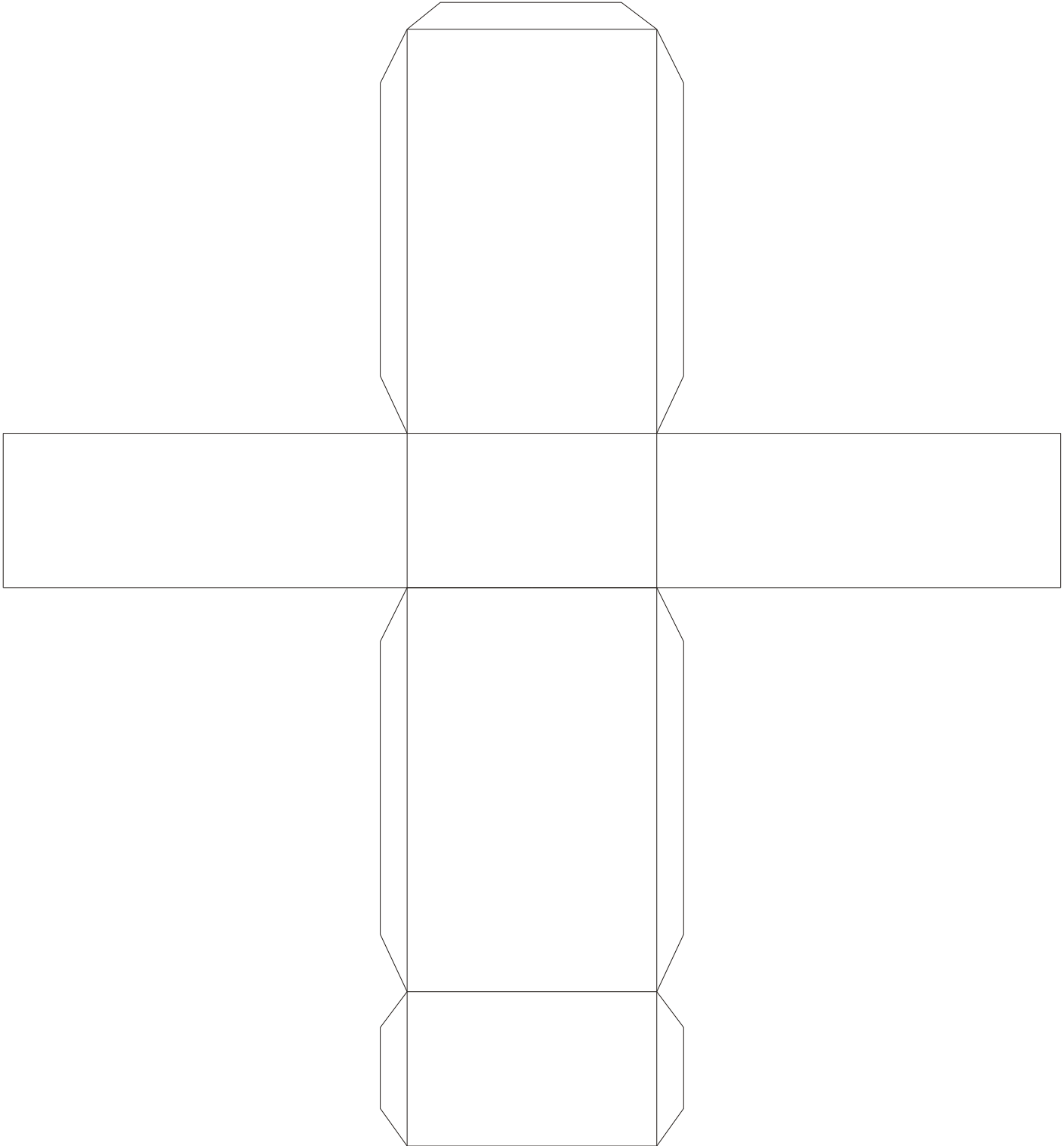




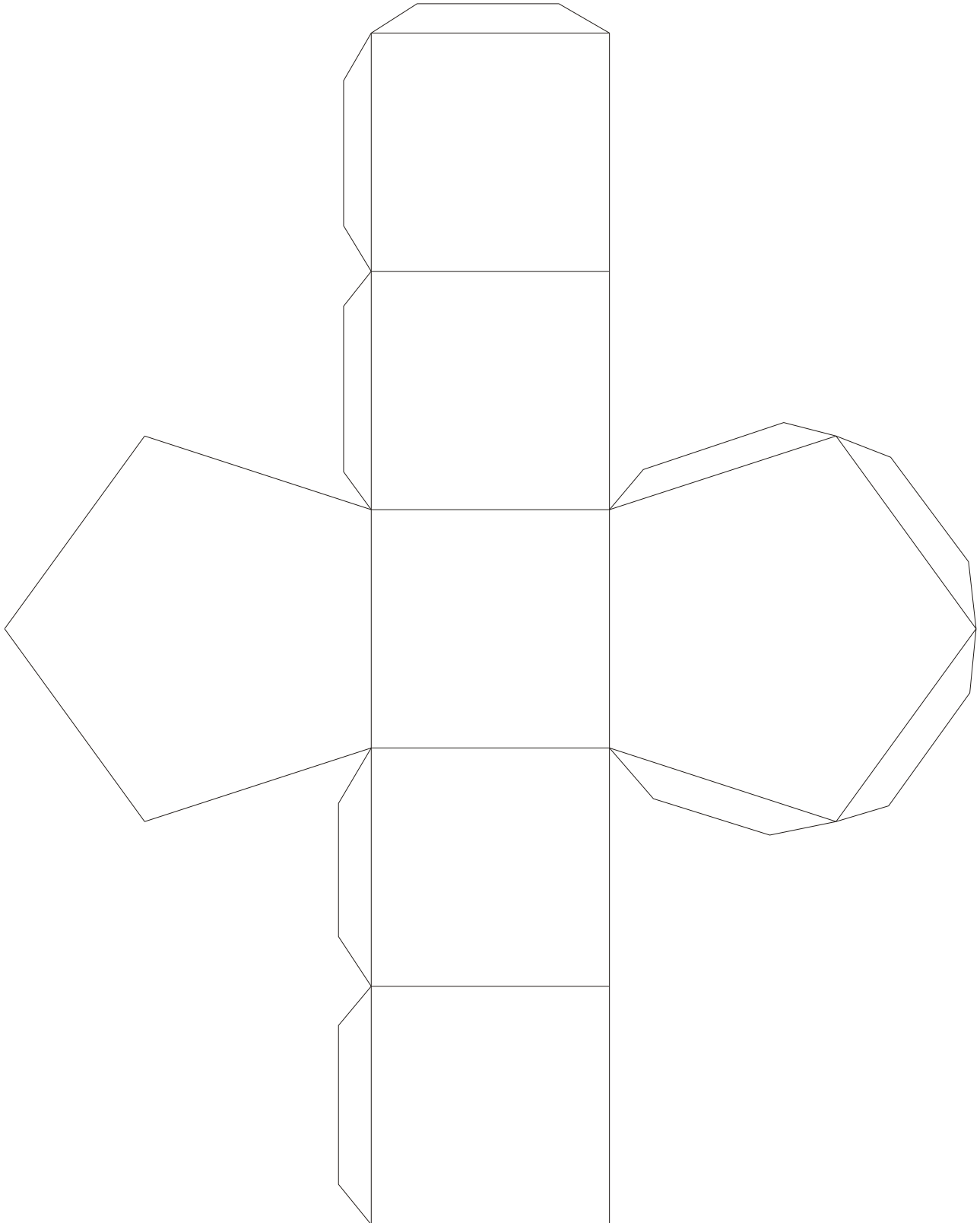
# Rectangular Prism



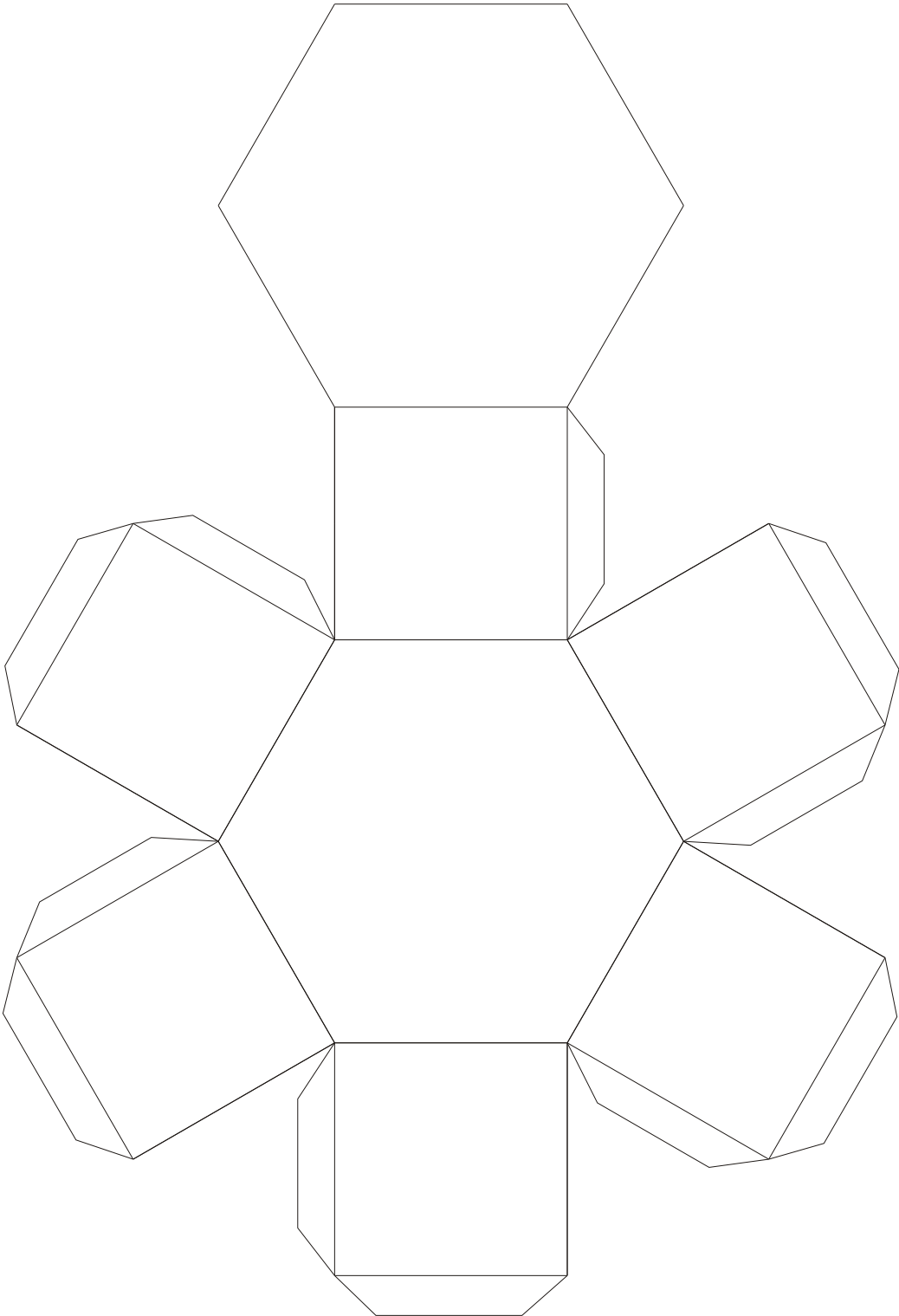
# Rectangular Prism



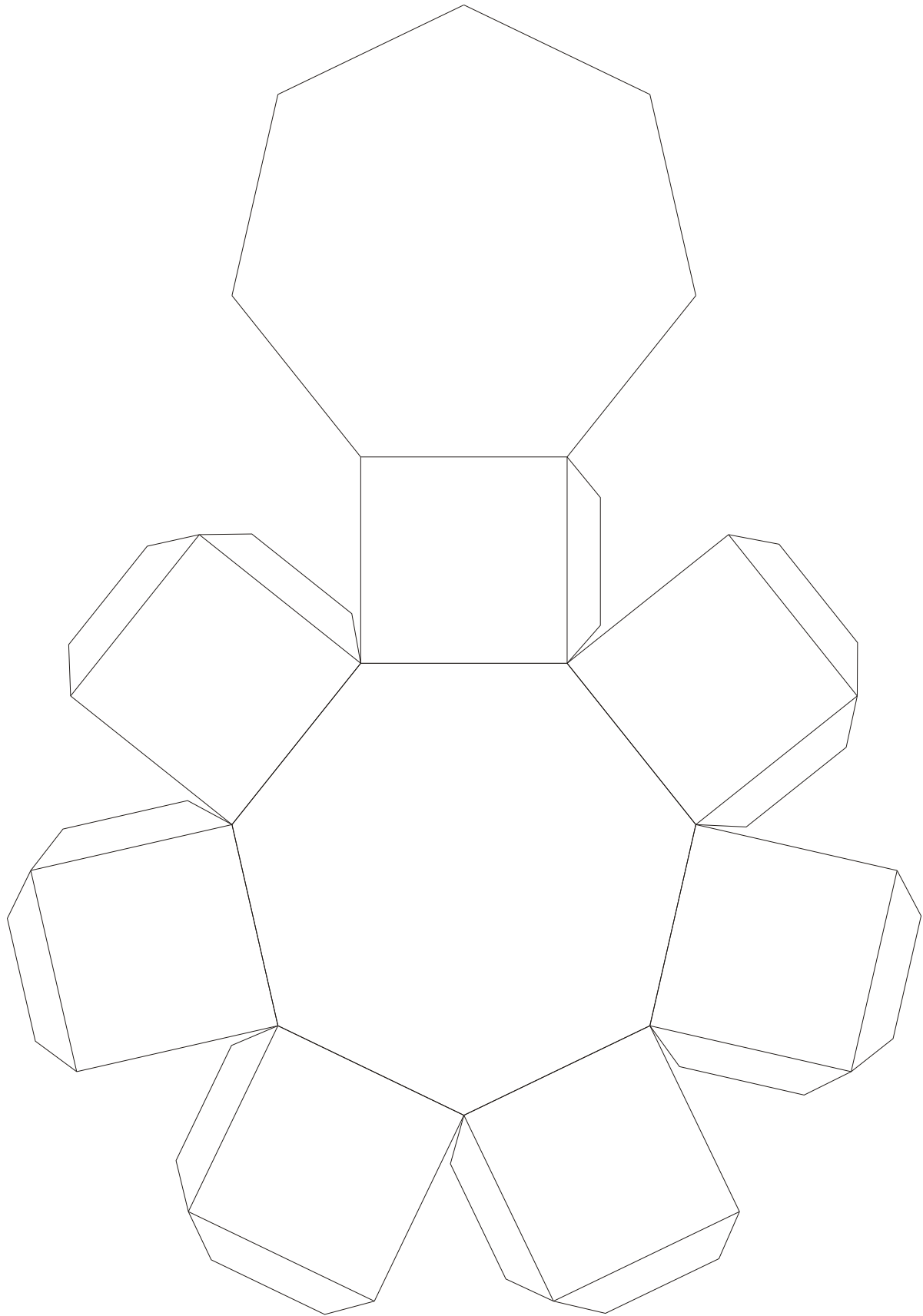
# Pentagonal Prism



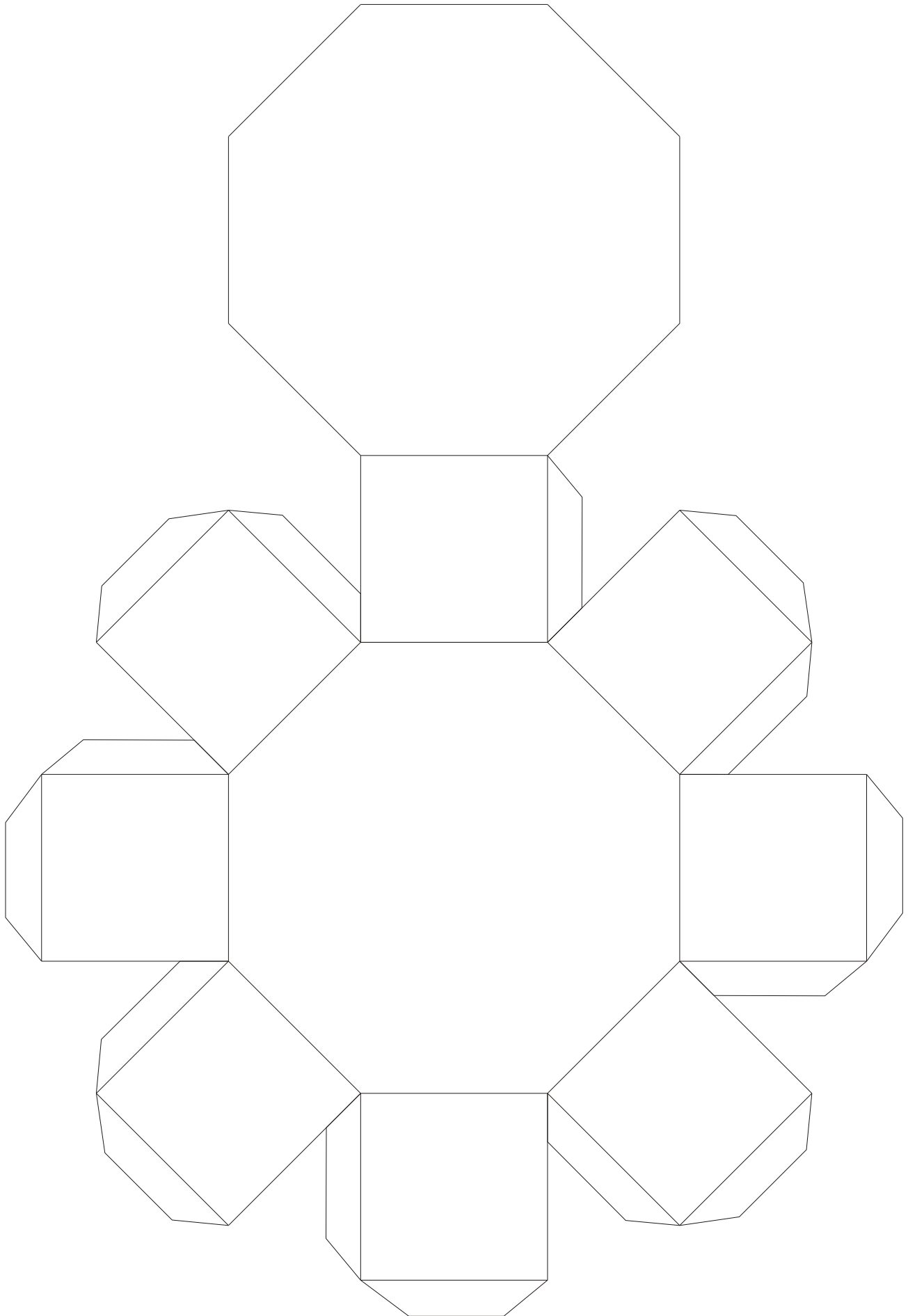
# Hexagonal Prism



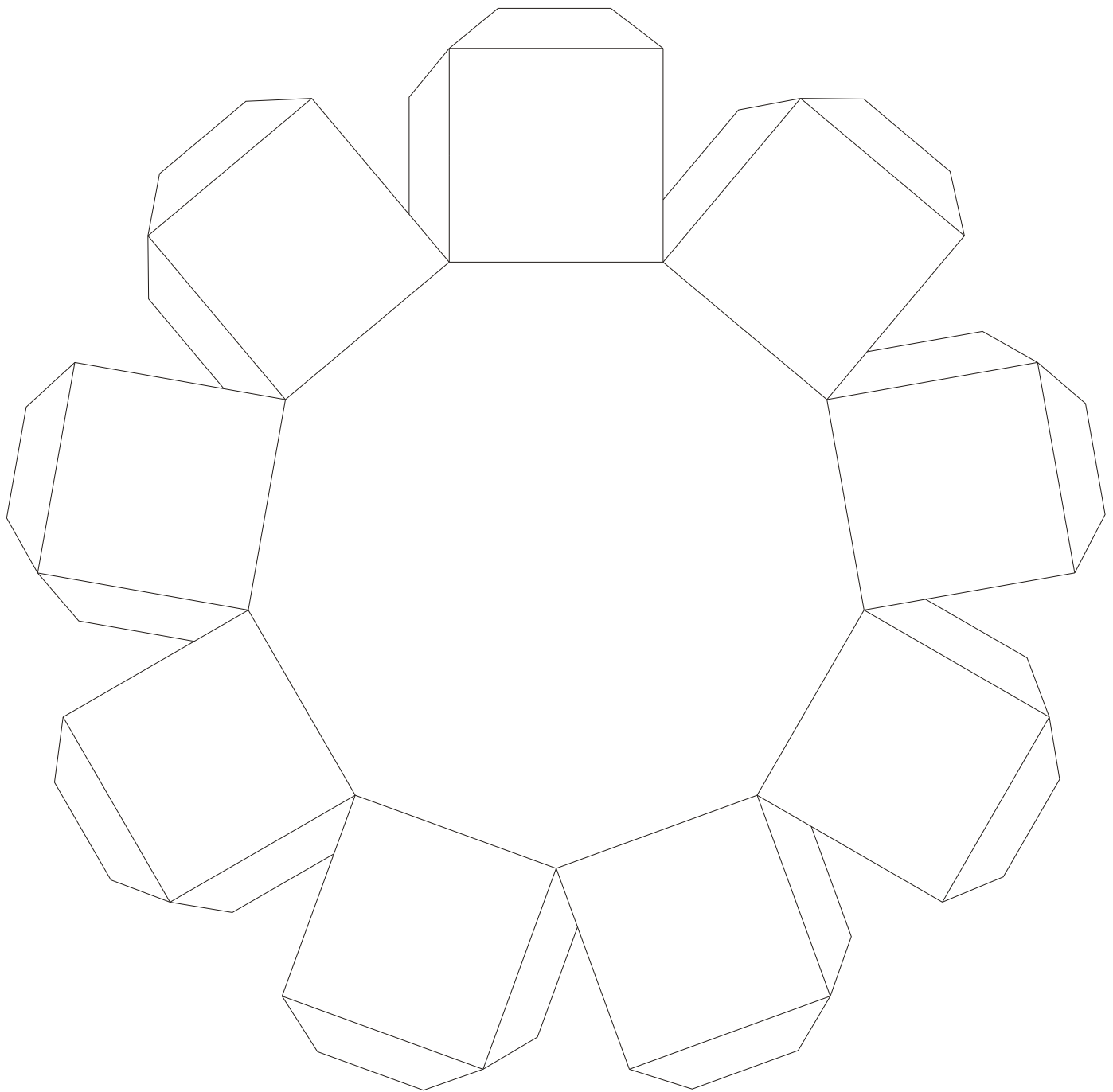
# Heptagonal Prism



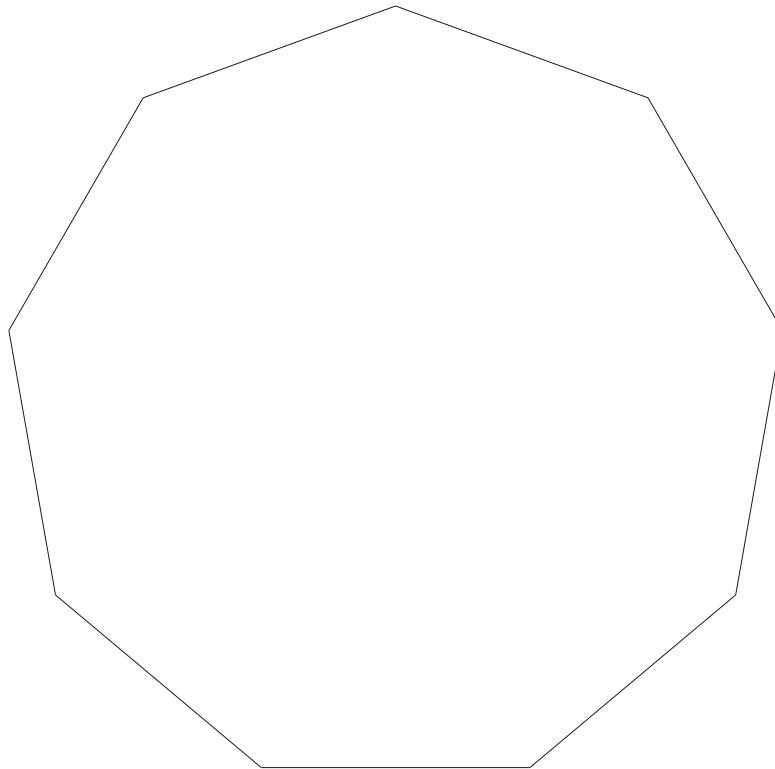
# Octagonal Prism



# Enneagonal Prism (Part 1)

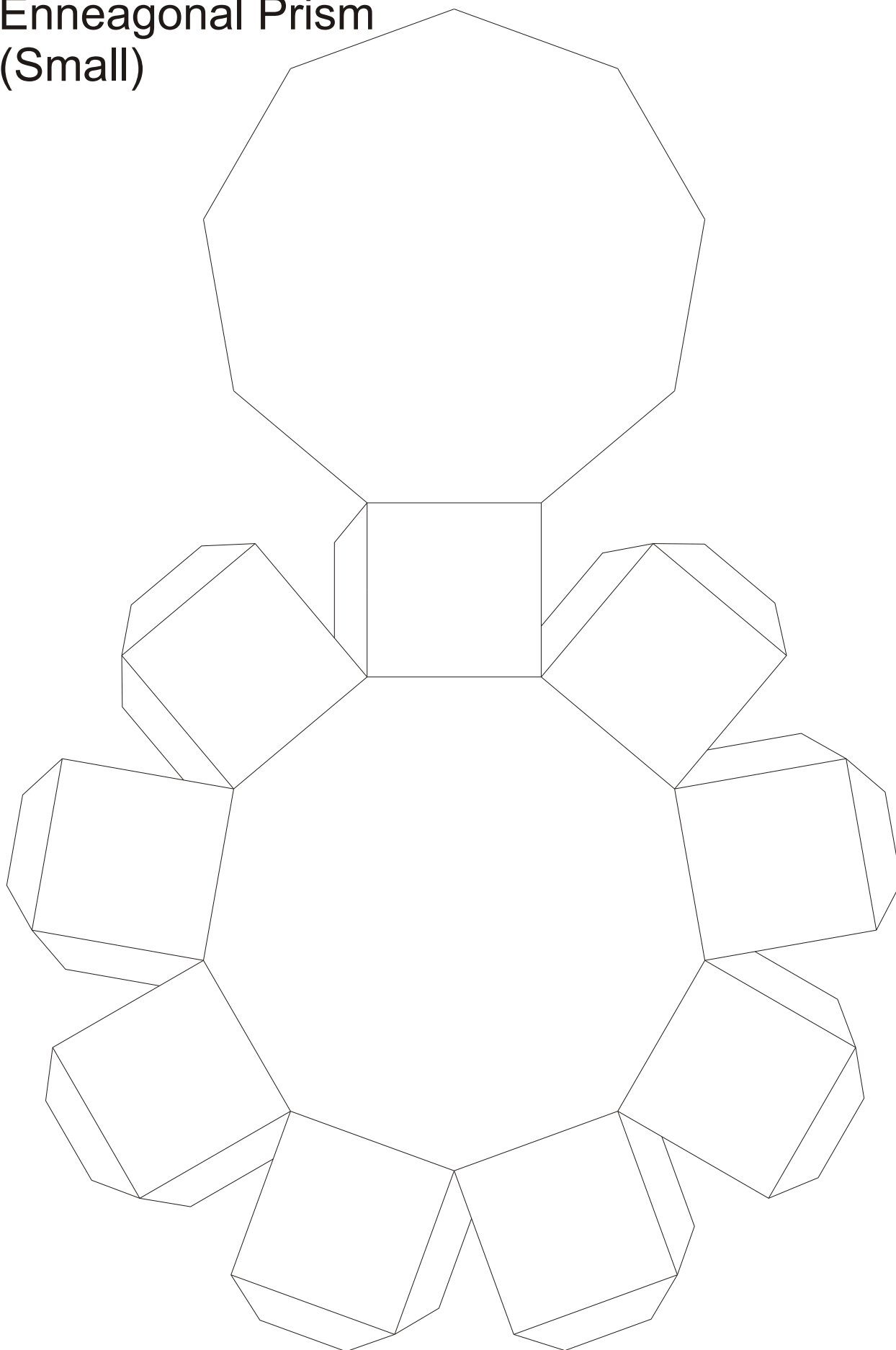


# Enneagonal Prism (Part 2)

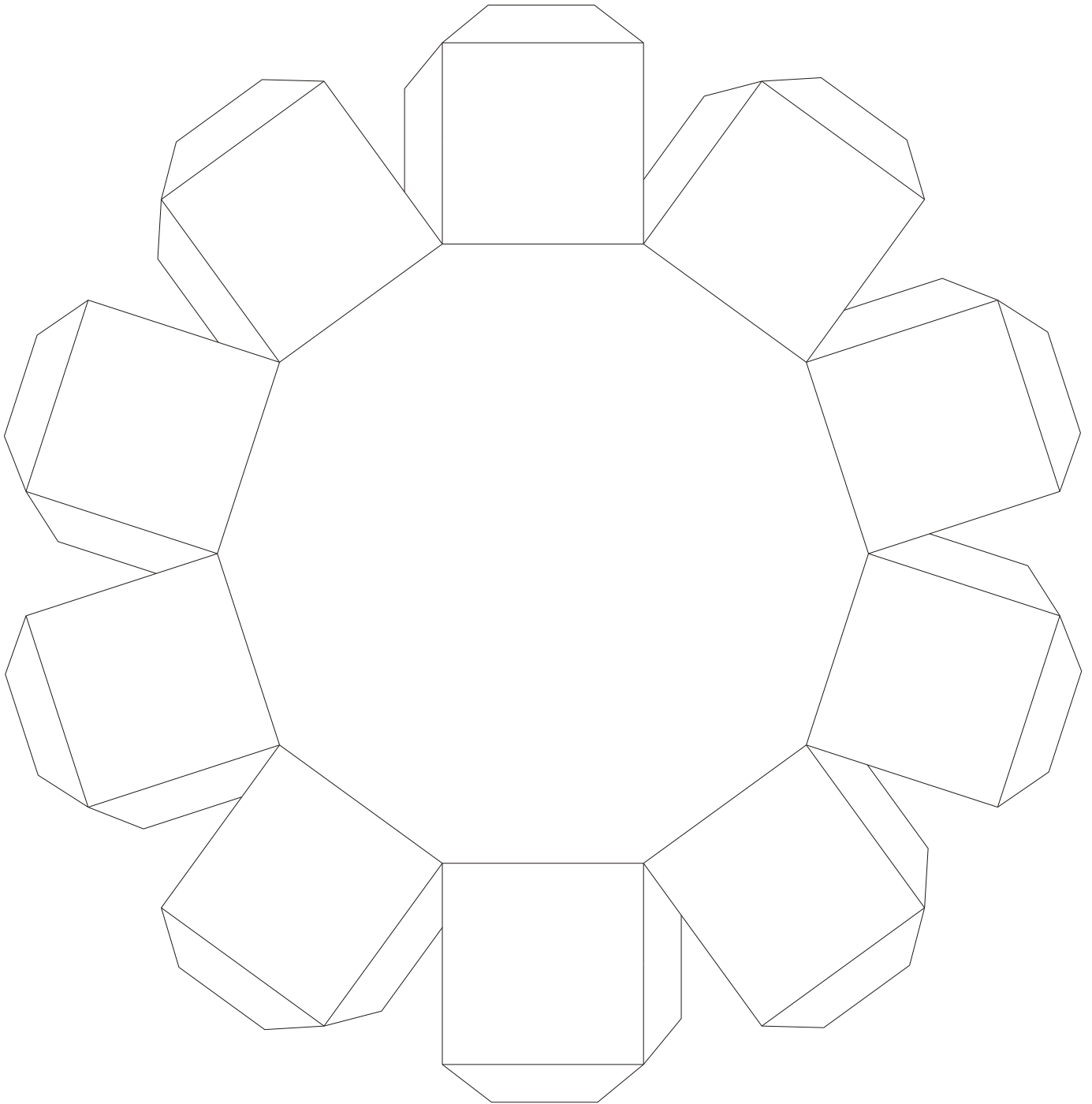




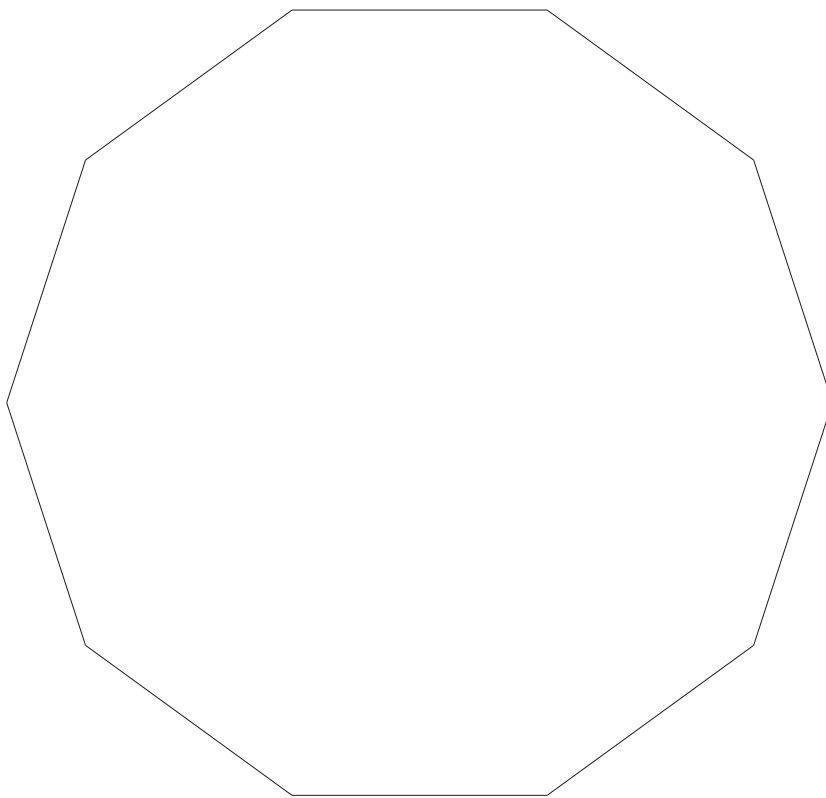
# Enneagonal Prism (Small)



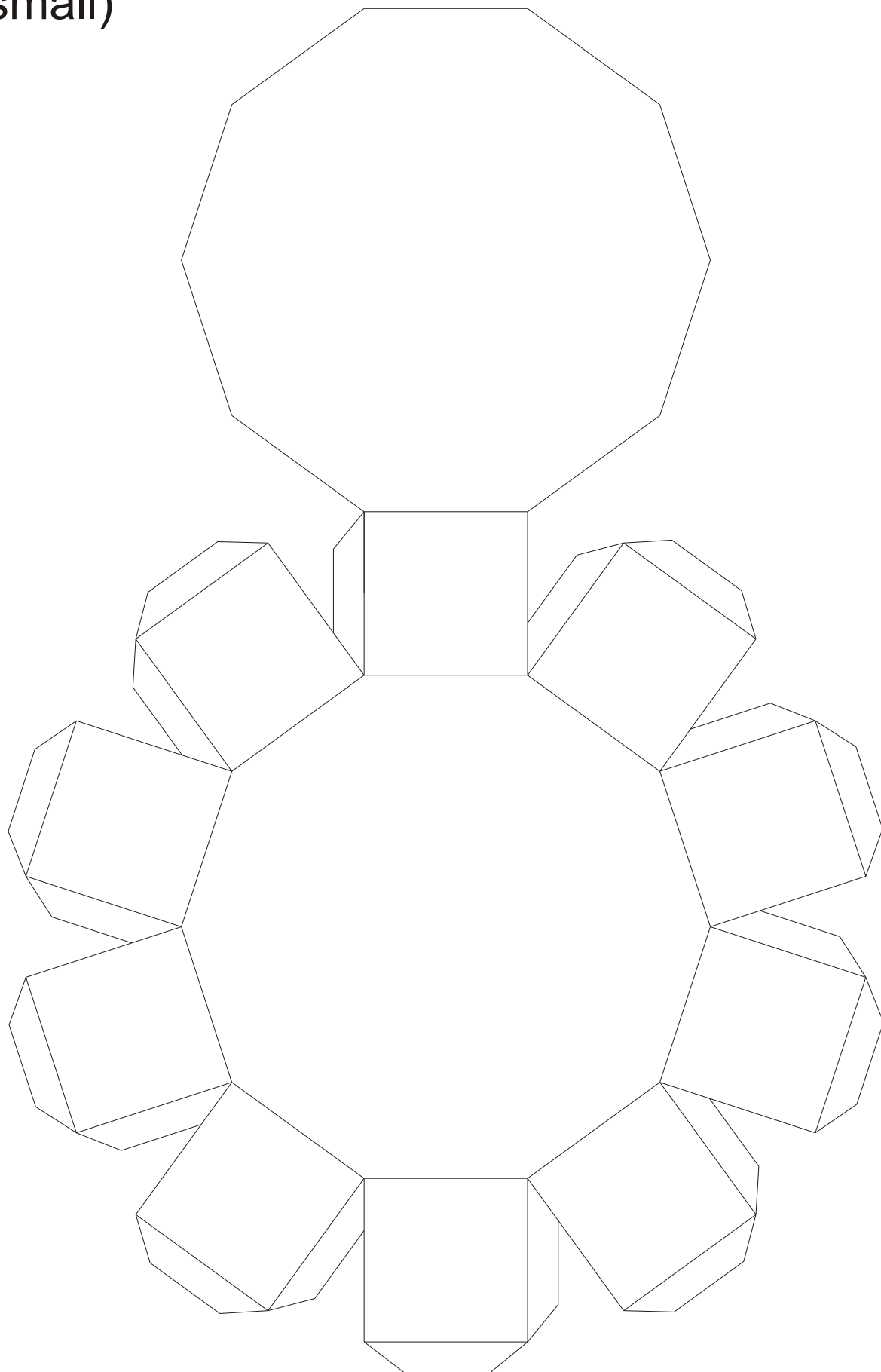
# Decagonal Prism (Part 1)



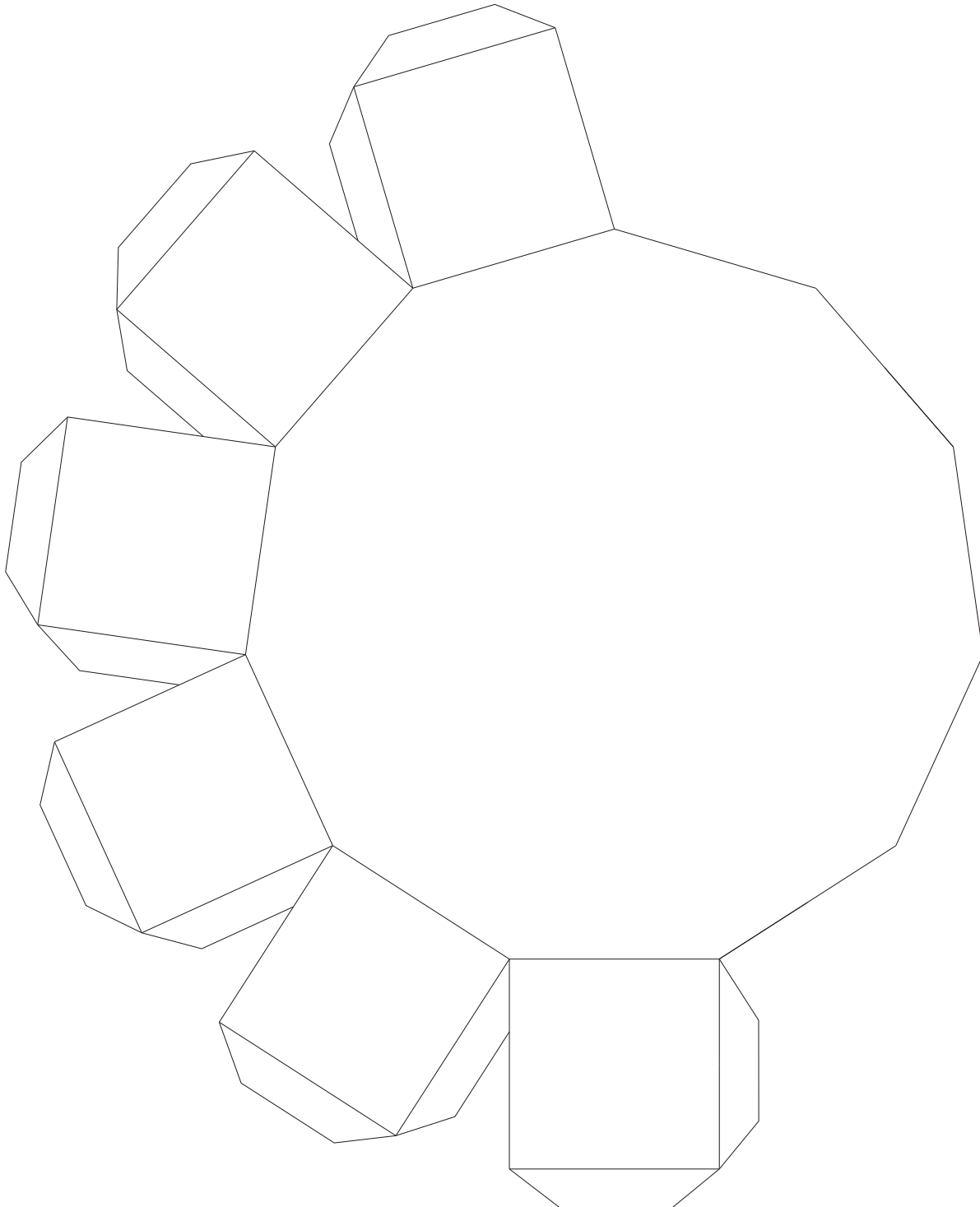
# Decagonal Prism (Part 2)



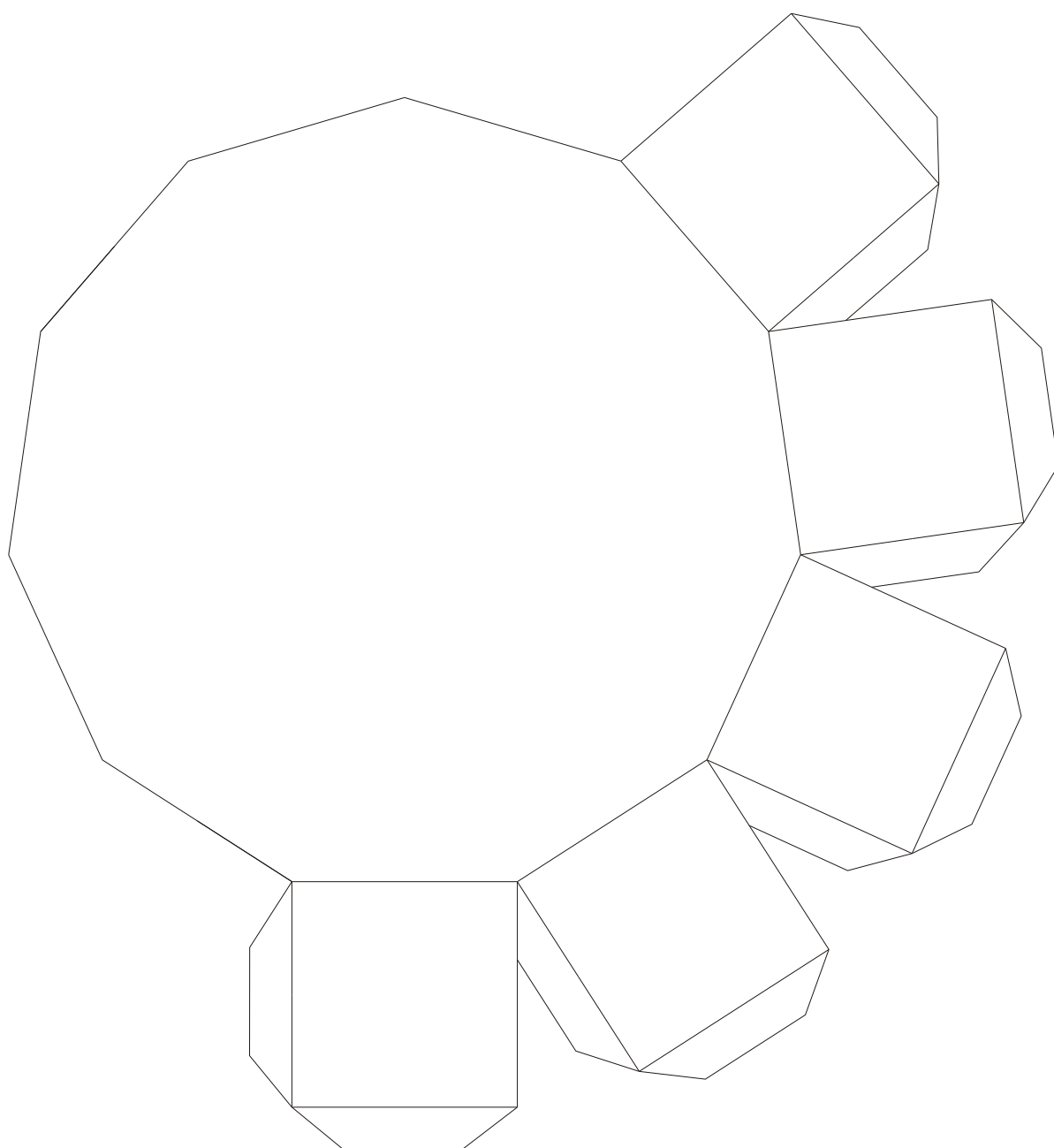
# Decagonal Prism (small)



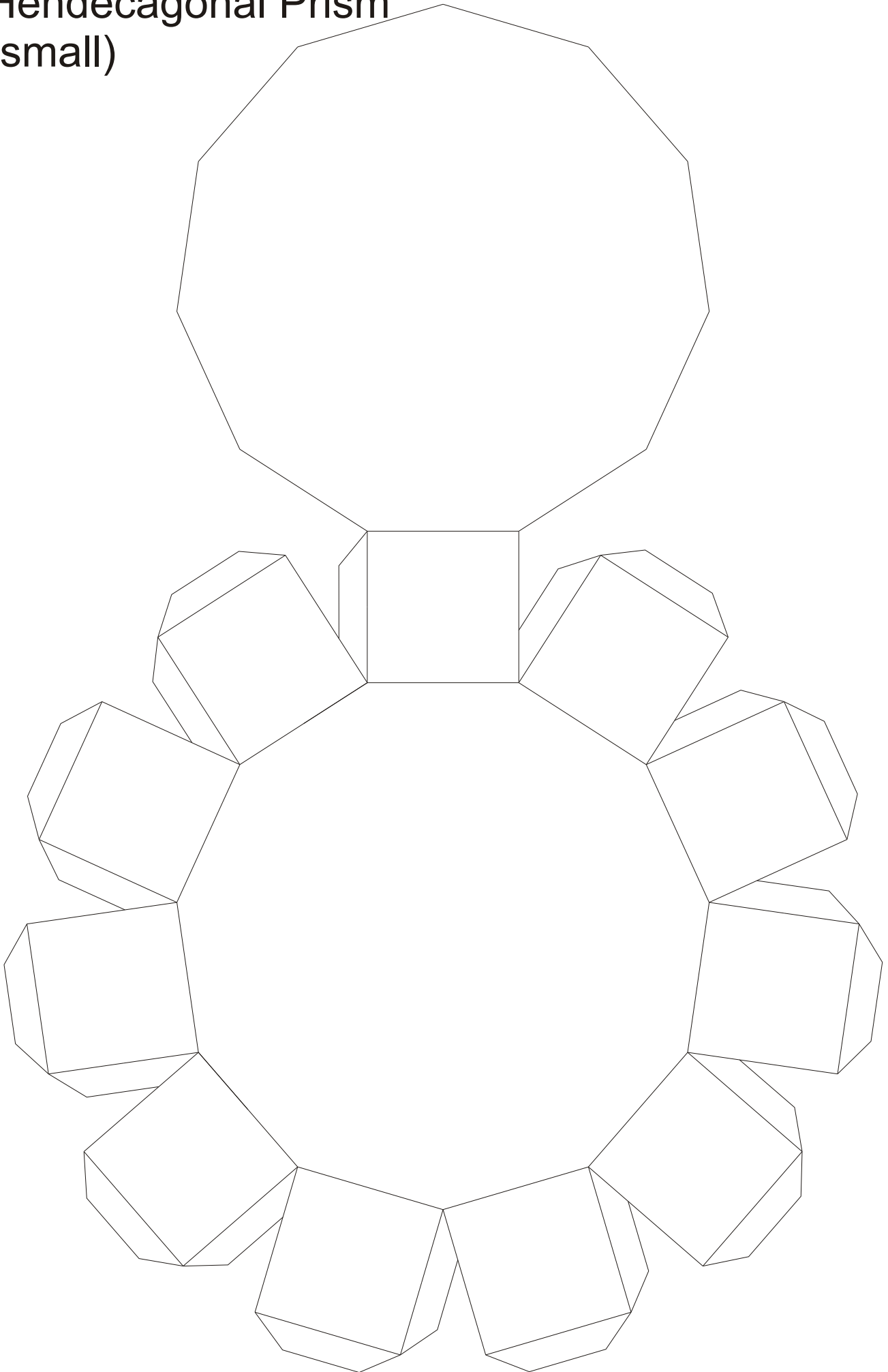
# Hendecagonal Prism (Part 1)



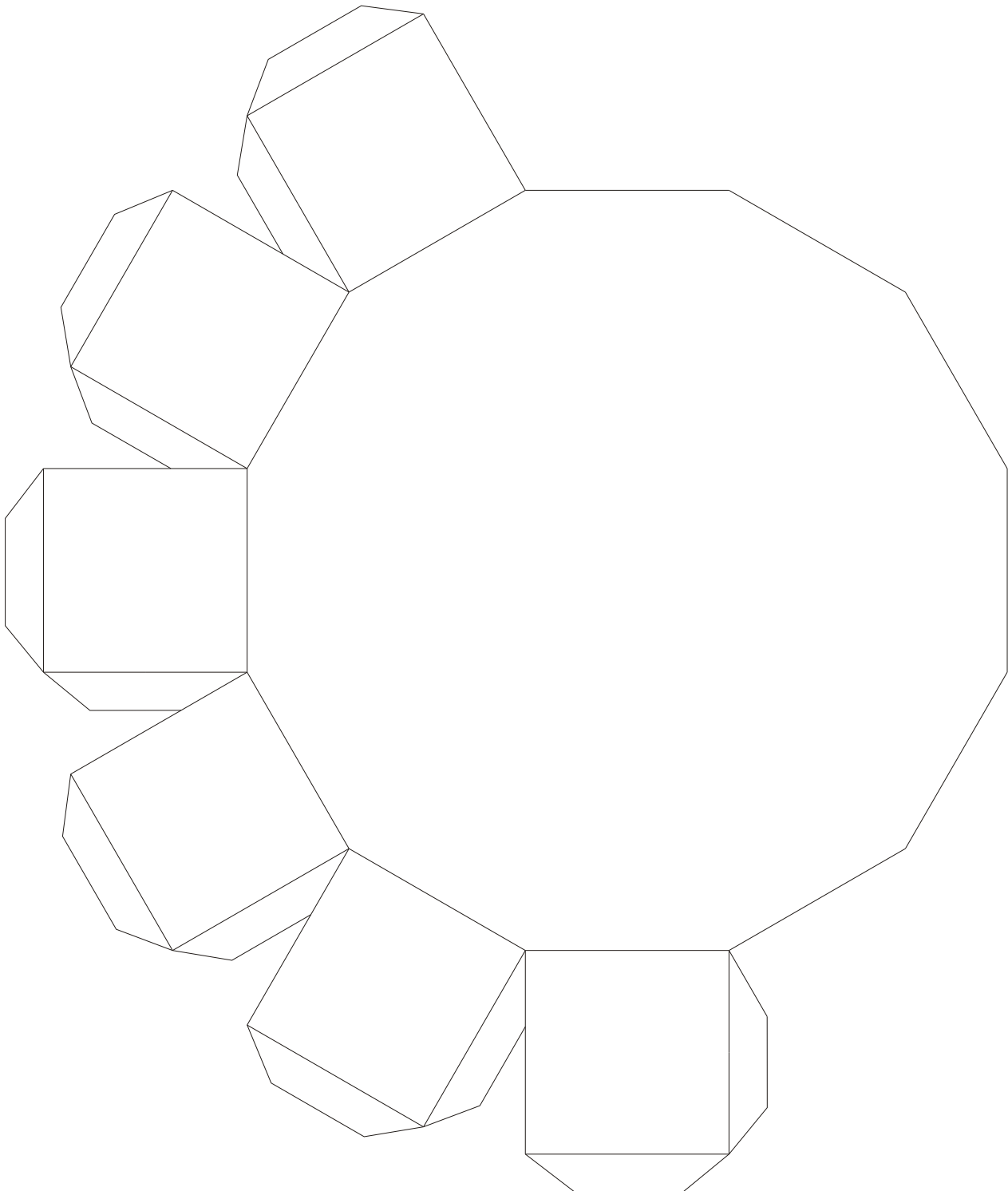
# Hendecagonal Prism (Part 2)



# Hendecagonal Prism (small)

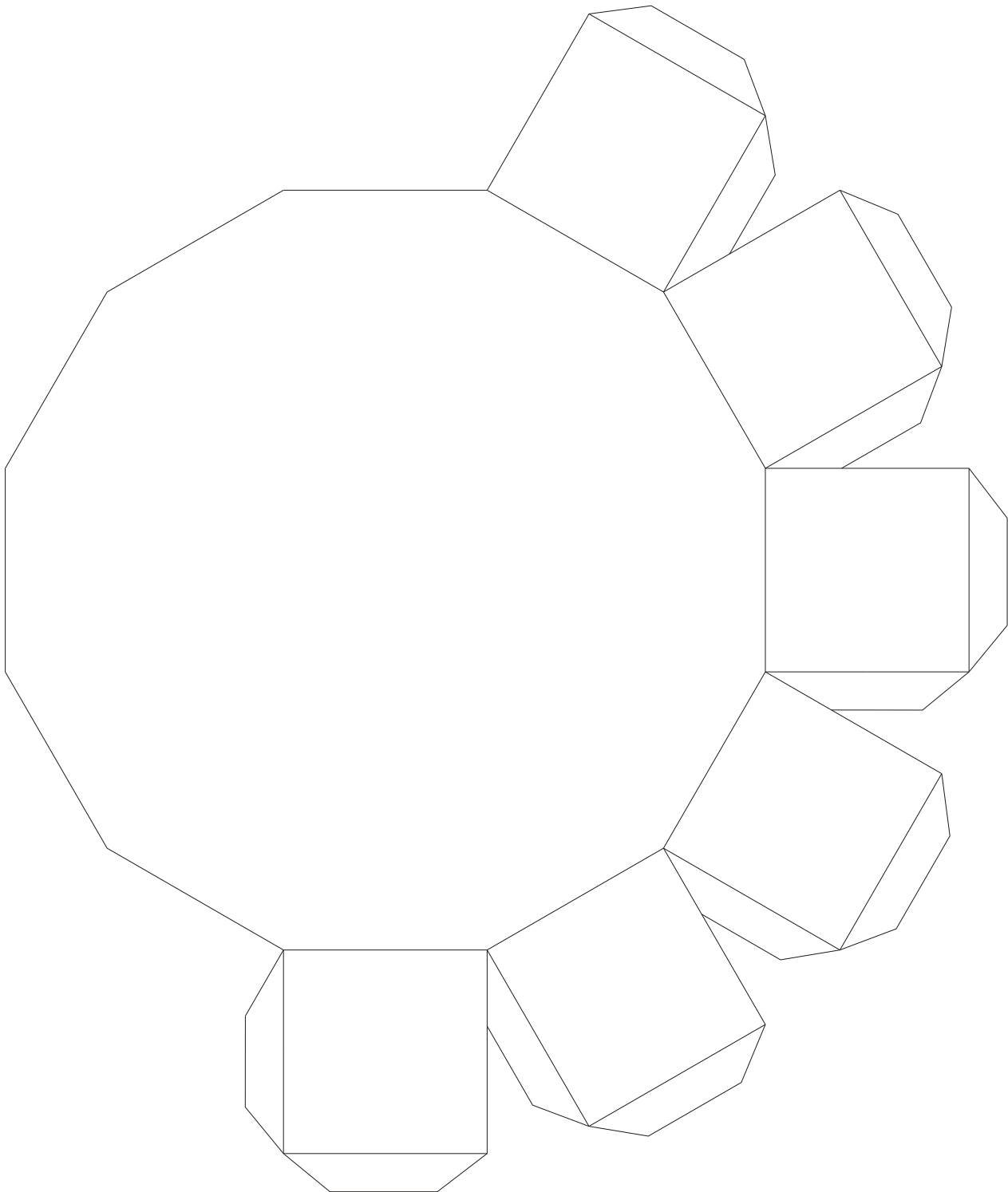


# Dodecagonal Prism (Part 1)





# Dodecagonal Prism (Part 2)



# Dodecagonal Prism (small version)

